

Krajobrazna arhitektica Branka Aničić : izbor radova

Stergaršek, Stanko; Rechner Dika, Iva

Other document types / Ostale vrste dokumenata

Publication year / Godina izdavanja: **2021**

Permanent link / Trajna poveznica: <https://urn.nsk.hr/urn:nbn:hr:204:366894>

Rights / Prava: [In copyright](#)/[Zaštićeno autorskim pravom.](#)

Download date / Datum preuzimanja: **2024-07-24**



Repository / Repozitorij:

[Repository Faculty of Agriculture University of Zagreb](#)



krajobrazna arhitektica
landscape architect

BRANKA ANIČIĆ

izbor radova
project selection

STUDIJ KRAJOBRAZNA ARHITEKTURA
SCHOOL OF LANDSCAPE ARCHITECTURE
Sveučilište u Zagrebu Agronomski fakultet
University of Zagreb Faculty of Agriculture
Svetošimunska c. 25
10000 Zagreb
www.agr.unizg.hr



krajobrazna arhitektica
BRANKA ANIČIĆ
izložba



7. - 28. travnja 2021.

OTVORENO: u srijedu - petak od 11.00 do 19.00
subota - 17.4. / nedjelja, 18.4. od 10.00 do 14.00

Galerija HAZU / dvorana IV
Medvedgradska 2, Zagreb

Uticajna 10.10.000 je ugrješene zbog požara u 2020. g.



krajobrazna arhitektica
landscape architect

BRANKA ANIČIĆ

izbor radova
project selection



STUDIJ KRAJOBRAZNA ARHITEKTURA
SCHOOL OF LANDSCAPE ARCHITECTURE
Sveučilište u Zagrebu Agronomski fakultet
University of Zagreb Faculty of Agriculture
Svetošimunska c. 25
10000 Zagreb
www.agr.unizg.hr



Odabrani radovi prikazani u ovoj knjižici pokazani su javnosti na izložbi *Krajobrazna arhitektica BRANKA ANIČIĆ*, realiziranoj radovima iz arhiva Zavoda za ukrasno bilje, krajobraznu arhitekturu i vrtu umjetnost te iz arhive autorice kao zajednički projekt Hrvatskog muzeja arhitekture Hrvatske akademije znanosti i umjetnosti i studija *Krajobrazna arhitektura* Agronomskog fakulteta Sveučilišta u Zagrebu.

Selected projects shown in this booklet were exposed to the public at the exhibition *Landscape Architect Branka Aničić*. It was realized with projects from the Department of Ornamental Plants, Landscape Architecture and Garden Art archive and from the author's private archive as a joint project of the Croatian Museum of Architecture (Croatian Academy of Science and Art) and the *School of Landscape Architecture* at the Faculty of Agriculture University of Zagreb.

Nažalost, zbog posljedica potresā u ožujku i prosincu 2020. godine, izložba je postala dio izmještenih aktivnosti Hrvatskog Muzeja arhitekture u Gliptoteci HAZU / dvorana IV, Medvedgradska 2 u trajanju od 7. do 28. travnja 2021.

Unfortunately, due to consequences of the earthquakes in March and December 2020, the exhibition became part of the Croatian Museum of Architecture's activities relocated to the Glyptotheque / hall IV, Croatian Academy of Sciences and Art, from 7th to 28th April 2021.

IMPRESUM IZLOŽBE
EXHIBITION IMPRINT

Autori izložbe i likovnog koncepta
Exhibition and art concept authors

Stanko Stergaršek
Iva Rechner Dika

Stručna suradnja
Professional cooperation

Borka Bobovec
Iva Ceraj

Tehnička podrška
Technical support

Aneta Mudronja Pletenac
Ana-Marija Zubović

Dizajn deplijana i plakata
Leaflet and poster design

Stanko Stergaršek
Iva Rechner Dika

Fotografije (deplijan, plakat)
Photos (leaflet, poster)

Petra Pereković



Hrvatski muzej arhitekture HAZU
The Croatian Museum of Architecture
Croatian Academy of Sciences and Art
Ivana Gorana Kovačića 37
10000 Zagreb
<https://www.facebook.com/hma.hazu>
www.hazu.hr

Studij Krajobrazna arhitektura
School of Landscape Architecture
Sveučilište u Zagrebu Agronomski fakultet
University of Zagreb Faculty of Agriculture
Svetošimunska c. 25
10000 Zagreb
www.agr.unizg.hr



„Iako nikad nije sebe stavljala u prvi plan, vrlo mi je brzo postalo jasno da je ova osoba odigrala ključnu ulogu u razvoju krajobrazne arhitekture u Hrvatskoj, kako u profesionalnom, tako i u akademskom djelovanju.“

Prof. Martin van den Toorn

„While never putting herself to the front, it became rapidly clear to me that this woman has played a key role in the development of landscape architecture in Croatia both professionally and academically.“

Prof. Martin van den Toorn

Tijekom Svjetskog mjeseca krajobrazne arhitekture prikazan je isječak iz bogatog opusa profesorice emerite Branke Aničić, koja je cijeli svoj radni vijek s jednakom strašću istodobno projektirala, proučavala i podučavala krajobraznu arhitekturu.

Školovana je na zagrebačkom Agronomskom fakultetu u vrijeme u kojem se kod nas još ne spominje profesija krajobrazni arhitekt i vrlo se brzo, pod mentorstvom Zvonimira Kanija (građevinsko-arhitektonski biro „Hidroprojekt“, Zagreb), profilirala kao izniman projektant.

Od 1986. godine djelovala je u Zavodu za ukrasno bilje, krajobraznu arhitekturu i vrtnu umjetnost Agronomskog fakulteta Sveučilišta u Zagrebu, gdje je izgradila akademsku karijeru i, zasigurno još važnije, studij *Krajobrazna arhitektura*, jedini cjeloviti petogodišnji interdisciplinarni i međufakultetski studij te vrste u Hrvatskoj. Vodila je studij i zavod istovremeno participirajući u životu fakulteta.

Istodobno nalazi i vremena i snage i za aktivnosti vezane uz etabliranje tada još slabo poznate profesije - sudjeluje u osnivanju i radu Hrvatskog društva krajobraznih arhitekata i Hrvatske komore arhitekata i inženjera u graditeljstvu (sada Hrvatska komora arhitekata), ali i u radu tijela na državnoj i lokalnoj razini.

Studij *Krajobrazna arhitektura* osnovan je akademske godine 1996./1997. (prvotno pod imenom Uređenje krajobraza) na krilima potpore Ministarstva graditeljstva i zaštite okoliša te uz sudjelovanje šest fakulteta Sveučilišta u Zagrebu i uz značajan doprinos studija *Krajobrazna arhitektura* Biotehničkog fakulteta Sveučilišta u Ljubljani (*študij Krajinska arhitektura Biotehniške fakultete Univerze v Ljubljani*), a osobito profesorā Janeza Marušiča i Dušana Ogrina.

Upravo suradnja s prof. Ogrinom obilježila je velik dio projektantskog opusa Branke Aničić. Svoje bivše i recentne studente stalno je uključivala u profesionalni rad i na taj ih način praktično školovala te stvorila bazu profesionalaca koji će kasnije postati projektanti i/ili nastavnici na studiju.

Tijekom karijere surađivala je s brojnim hrvatskim arhitektima i urbanistima, ali se i samostalno ili u suradnji s kolegama iz profesije bavila i temama imanentnim istodobno i krajobraznoj arhitekturi i arhitekturi i urbanizmu, hrabro sučeljavajući svoje ideje i shvaćanje otvorenog prostora s profesionalcima iz ostalih srodnih područja.

Uspješno je sudjelovala na više javnih i pozivnih natječaja te osvojila jednu prvu i dvije druge nagrade te jedan otkup. Svoje grupne ili individualne projekte izlagala je na dvadesetak izložbi te na tri *Salona arhitekture*.

During the *World Landscape Architecture Month*, a clip from the rich opus of Professor Emerita Branka Aničić is presented. Throughout her entire working life she has simultaneously designed, studied and taught landscape architecture with equal passion.

She studied at the Faculty of Agriculture in Zagreb at a time when the profession of landscape architect was not yet being mentioned in our country and very quickly, under the mentorship of Zvonimir Kani (civil engineering and architectural office “Hidroprojekt”, Zagreb) she became an exceptional designer.

Since 1986 she has worked at the Department of Ornamental Plants, Landscape Architecture and Garden Art, Faculty of Agriculture University of Zagreb, where she built an academic career, and, more importantly, founded the *School of Landscape Architecture*, the only comprehensive five-year interdisciplinary and interfaculty school in this field in Croatia. She was the head of the School and Department and was participating in the life of the Faculty at the same time.

Concurrently she found the time and energy for activities related with establishing of the then little-known profession - participated in the founding and work of the Croatian Society of Landscape Architects and the Croatian Chamber of Architects and Civil Engineers (now the Croatian Chamber of Architects), but was also active in the local and national administrative bodies.

School of Landscape Architecture was founded in the academic year 1996/1997 with the support of the Ministry of Construction and Environmental Protection and with the participation of six faculties of the University of Zagreb and with a significant contribution of the School of Landscape Architecture at the Biotechnical Faculty University of Ljubljana, especially professors Janez Marušič and Dušan Ogrin.

It is precisely the collaboration with prof. Ogrin that marked a large part of Branka Aničić's design opus. She continuously involved her former students and students at the time in professional work and in that way practically educated them and created a base of professionals who later became designers and/or teachers at the School.

During her career, she collaborated with numerous Croatian architects and urban planners, but also on her own or in collaboration with colleagues from her profession addressed topics immanent to landscape architecture, architecture and urbanism, boldly confronting her ideas and understanding of open space with professionals from other related fields.

She successfully participated in several public and invitation design competitions and won one first, two second prizes and one redemption.

She exhibited her group or individual projects at about twenty exhibitions and at three Architecture Salons.

Sudjelovala je u organizaciji većeg broja studentskih i profesionalnih izložbi i skupova, pri čemu posebno treba izdvojiti međunarodnu konferenciju – *ECLAS Dubrovnik 2000 (European Council of Landscape Architecture Schools / Europsko vijeće studija krajobrazne arhitekture)*.

Dobitnica je priznanja za utemeljenje i razvoj Hrvatskog društva krajobraznih arhitekata 2017. godine.

Na godišnjoj konferenciji ECLAS-a u Gentu (Belgija) 2018. godine dobila je, na prijedlog prof. Martina van den Toorna, Nagradu za životno postignuće (*ECLAS Lifetime Achievement Award*).

Godine 2020. izabrana je u počasno zvanje profesorice emerite.

U knjižici su pokazani odabrani radovi i ponešto originalnih crteža i skica, prikazani na izložbi. Neki od značajnijih radova, bilo da se radi o izvedenim, natječajnim ili neizvedenim projektima, ilustrirani su većim brojem priloga iz različitih faza razrade kako bi se pokazala višeslojnost zadataka, pa i sa željom da se prikaže kompleksnost same profesije krajobrazni arhitekt.

Treba napomenuti da je izbor sužen na projekte iz domene krajobraznog oblikovanja i da ne obuhvaća planerski dio opusa prof. Aničić.

Na izložbi je znanstveni doprinos pokazan izborom knjiga i publikacija, a edukativni projekcijom fotografija s nastave.

I izložbu i ovu knjižicu pripremili smo za Vas s veseljem i kao iskaz zahvalnosti našoj profesorici i kolegici, krajobraznoj arhitektici Branki Aničić, s nadom da će izložba pridonijeti boljem uvidu u vrijednost njezina rada i boljem prepoznavanju tema kojima se bave *krajobrazni arhitekti* i koje poučavamo na studiju *Krajobrazna arhitektura* Agronomskog fakulteta Sveučilišta u Zagrebu.

Vjerujemo da će i knjižica i izložba pridonijeti boljem međusobnom razumijevanju krajobraznih arhitekata i srodnih profesija koje se bave projektiranjem svih otvorenih prostora.

Prof. art. Stanko Stergaršek
arhitekt

Doc. dr. sc. Iva Rechner Dika
krajobrazna arhitektica

Also, she participated in the organization of a large number of student and professional exhibitions and conferences, out of which the international conference – *ECLAS Dubrovnik 2000 (European Council of Landscape Architecture Schools)* should be singled out.

In 2017, she received a recognition for the establishment and development of the Croatian Society of Landscape Architects.

At the annual ECLAS conference in Ghent (Belgium) in 2018, at the proposal of prof. Martin van den Toorn, she received the ECLAS Lifetime Achievement Award.

In 2020, she was elected to the honorary title of Professor Emerita.

The booklet presents selected projects and some original drawings and sketches, shown at the exhibition. Some of the most significant projects, whether built, designed for competitions or not built, are illustrated with a number of contributions from different design phases to show the multi-layered tasks, and with the desire to show the complexity of the profession of landscape architect.

It should be noted that the selection has been narrowed to landscape design projects and does not include the planning part of prof. Aničić's opus.

At the exhibition her scientific contribution was shown by the selection of books and publications, and the educational one with the photographs from classes.

We have prepared this booklet and this exhibition for you with joy and as a sign of gratitude to our professor and colleague, landscape architect Branka Aničić, hoping that the exhibition will contribute to a better insight into the value of her work and a better recognition of topics that *landscape architects* deal with and that we teach at the *School of Landscape Architecture* at the Faculty of Agriculture University of Zagreb.

We believe that this booklet and the exhibition will both contribute to a better mutual understanding between landscape architects and related professions dealing with the design of all open spaces.

assoc. prof. art. Stanko Stergaršek
architect

asst. prof. Iva Rechner Dika, PhD
landscape architect

SADRŽAJ

PARKOVI

PARK BARTOLA KAŠIĆA
(KVATERNIKOV TRG) - ZAGREB
(2 plakata 70x100 + original crtež 69,5x58,5)

PARK GRIČ - ZAGREB
(1 plakat 70x100)

MJESNI PARK - TOVARNIK
(1 plakat 70x70)

KAZALIŠNI PARK - RIJEKA
(2 plakata 70x100)

PARK - PUČKO OTVORENO UČILIŠTE
VELIKA GORICA
(4 plakata 70x100)

PARK PRIRODE MEDVEDNICA
KRALJIČIN ZDENAC - ZAGREB
(1 plakat 70x100)

TRGOVI I ULICE

TRG ANTE STARČEVIĆA - ZAGREB
(1 plakat 70x70 + originalne skice)

JURKOVIĆEVA ULICA – ZAGREB
(1 plakat 70x70)

TRG - PUČKO OTVORENO UČILIŠTE
VELIKA GORICA
(3 plakata 70x100)

TRG BANA JOSIPA JELAČIĆA – SISAK
(1 plakat 70x70)

TRG MARŠALA TITA
(HNK) – ZAGREB
1 plakat 70x100

GROBLJA

GROBLJE – ROVINJ
(1 plakat 70x100)

GROBLJE KUŠANEC - VELIKA GORICA
(3 plakata 70x100)

AUTOCESTE

BARIJERE ZA ZAŠTITU OD BUKE
LIČKO LEŠĆE - LIČKI OSIK
NOVI MAROF - GORIČAN
VELIKA KOPANICA - ŽUPANJA
(1 plakat 70x70)

PRATEĆI USLUŽNI OBJEKTI
PUO JASENICE
PUO NADIN
(1 plakat 70x70)

CONTENT

PARKS

1 BARTOL KAŠIĆ PARK
(KVATERNIK SQUARE) - ZAGREB
(2 posters 70x100 + original drawing 69,5x58,5)

4 GRIČ PARK - ZAGREB
(1 poster 70x100)

5 TOVARNIK CITY PARK
(1 poster 70x70)

6 THEATRE PARK - RIJEKA
(2 posters 70x100)

8 OPEN COMMUNITY COLLEGE PARK
VELIKA GORICA
(4 posters 70x100)

12 MEDVEDNICA NATURE PARK
THE QUEEN'S WELL - ZAGREB
(1 poster 70x100)

SQUARES AND STREETS

13 ANTE STARČEVIĆ SQUARE - ZAGREB
(1 poster 70x70 + original sketches)

15 JURKOVIĆEVA STREET – ZAGREB
(1 poster 70x70)

17 OPEN COMMUNITY COLLEGE SQUARE
VELIKA GORICA
(3 posters 70x100)

20 BAN JOSIP JELAČIĆ SQUARE – SISAK
(1 poster 70x70)

21 MARSHAL TITO SQUARE
(CROATIAN NATIONAL THEATRE) – ZAGREB
1 poster 70x100

CEMETERIES

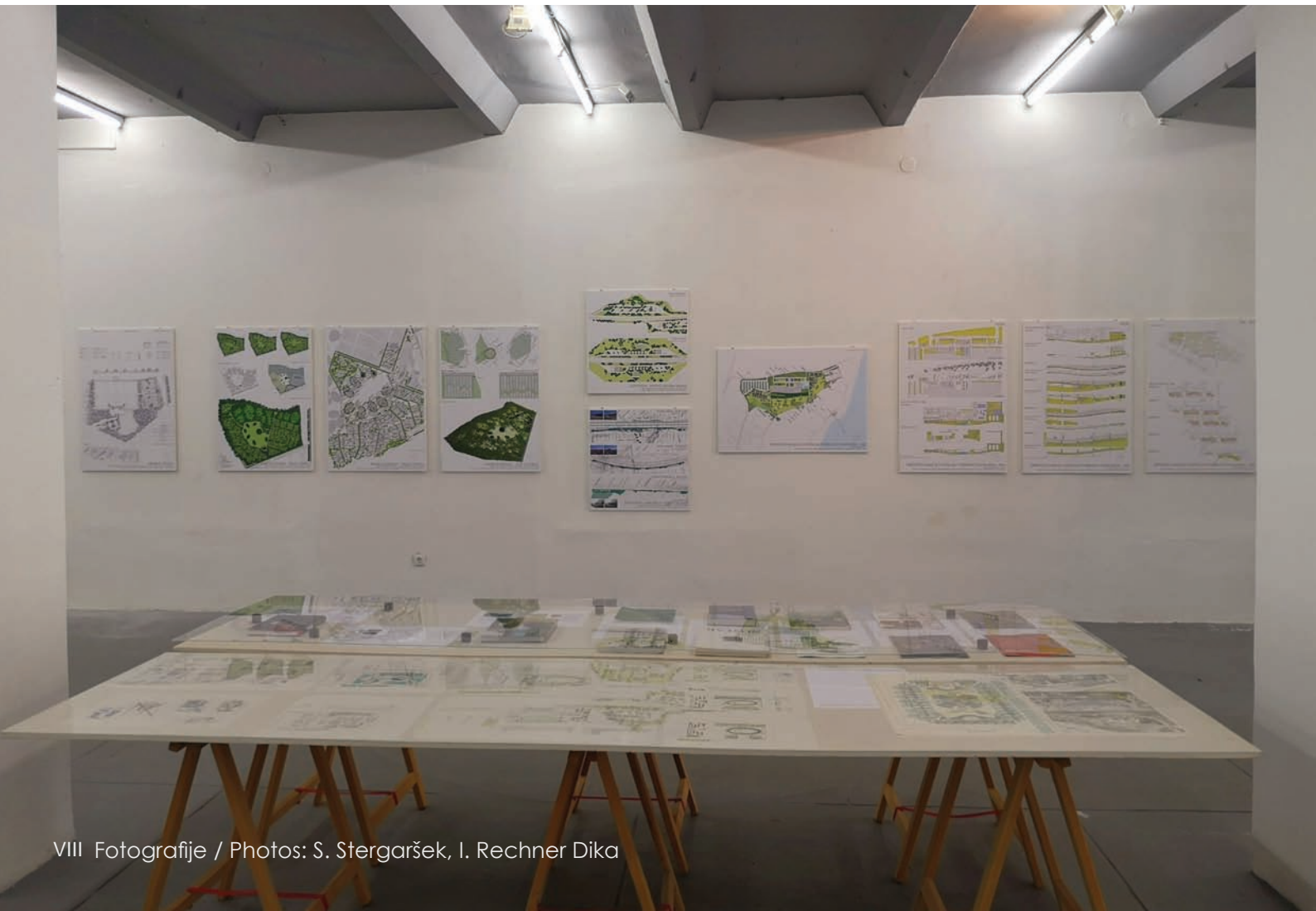
22 CEMETERY – ROVINJ
(1 poster 70x100)

23 KUŠANEC CEMETERY - VELIKA GORICA
(3 posters 70x100)

MOTORWAYS

26 NOISE PROTECTION BARRIERS
LIČKO LEŠĆE - LIČKI OSIK
NOVI MAROF - GORIČAN
VELIKA KOPANICA - ŽUPANJA
(1 poster 70x70)

27 ACCOMPANYING REST AREAS
JASENICE
NADIN
(1 poster 70x70)



TURIZAM, SPORT I REKREACIJA

TURISTIČKO NASELJE S HOTELOM
POSEBNOG STANDARDA - NIN
idejni projekt, 2007.
(1 plakat 100x70)

TURISTIČKO NASELJE S HOTELOM
POSEBNOG STANDARDA - NIN
glavni projekt, 2011.- 2012.
(3 plakata 70x100)

STAMBENA NASELJA

STAMBENI BLOK
KNEZA MISLAVA / SOLOVLJEVA ULICA - ZAGREB
(1 plakat 70x70)

STAMBENI BLOK
NASELJE GREDICE - ZAGREB
(1 plakat 70x70)

POSLOVNI OBJEKTI

GLUMINA BANKA - ZAGREB
(1 plakat 70x70)

ŠKOLE

OSNOVNA ŠKOLA "7. STUDENI 1943."
KOPRIVNICA
(1 plakat 70x70)

ŠKOLA "VLADIMIR PRELOG"
EDUKATIVNI VRT - ZAGREB
(2 plakata 70x100)

SAKRALNI OBJEKTI

CRKVA SVETA MATI SLOBODE - ZAGREB
(1 plakat 70x70)

OBITELJSKE KUĆE

VRT - OBITELJSKA KUĆA KATAVIĆ - ZAGREB
(1 plakat 70x70)

VILA OKRUGLJAK - ZAGREB
(1 plakat 70x70)

KULTURNI KRAJOBRAZI

KULTURNI KRAJOBRAZNI PRIMORSKE HRVATSKE
(1 plakat 60x140 / originalni plakat - 47. ZAGREBAČKI SALON)

**KNJIGE
BROŠURE I ZBORNICI**

**POGOVOR
POSTAV IZLOŽBE**

TOURISM, SPORT AND RECREATION

TOURIST RESORT WITH A SPECIAL STANDARD
HOTEL - NIN
conceptual design, 2007
28 (1 poster 100x70)

TOURIST RESORT WITH A SPECIAL STANDARD
HOTEL - NIN
main design, 2011- 2012
29 (3 posters 70x100)

RESIDENTIAL BLOCKS

RESIDENTIAL BLOCK
DUKE MISLAV / SOLOVLJEVA STREET - ZAGREB
32 (1 poster 70x70)

RESIDENTIAL BLOCK
GREDICE SETTLEMENT - ZAGREB
33 (1 poster 70x70)

BUSINESS BUILDINGS

GLUMINA BANK - ZAGREB
34 (1 poster 70x70)

SCHOOLS

"7th NOVEMBER 1943." ELEMENTARY SCHOOL
KOPRIVNICA
35 (1 poster 70x70)

"VLADIMIR PRELOG" SCHOOL
EDUCATIONAL GARDEN - ZAGREB
36 (2 posters 70x100)

SACRAL BUILDINGS

THE HOLY MOTHER OF FREEDOM CHURCH - ZAGREB
38 (1 poster 70x70)

FAMILY HOUSES

KATAVIĆ FAMILY HOUSE GARDEN - ZAGREB
39 (1 poster 70x70)

VILLA OKRUGLJAK - ZAGREB
40 (1 poster 70x70)

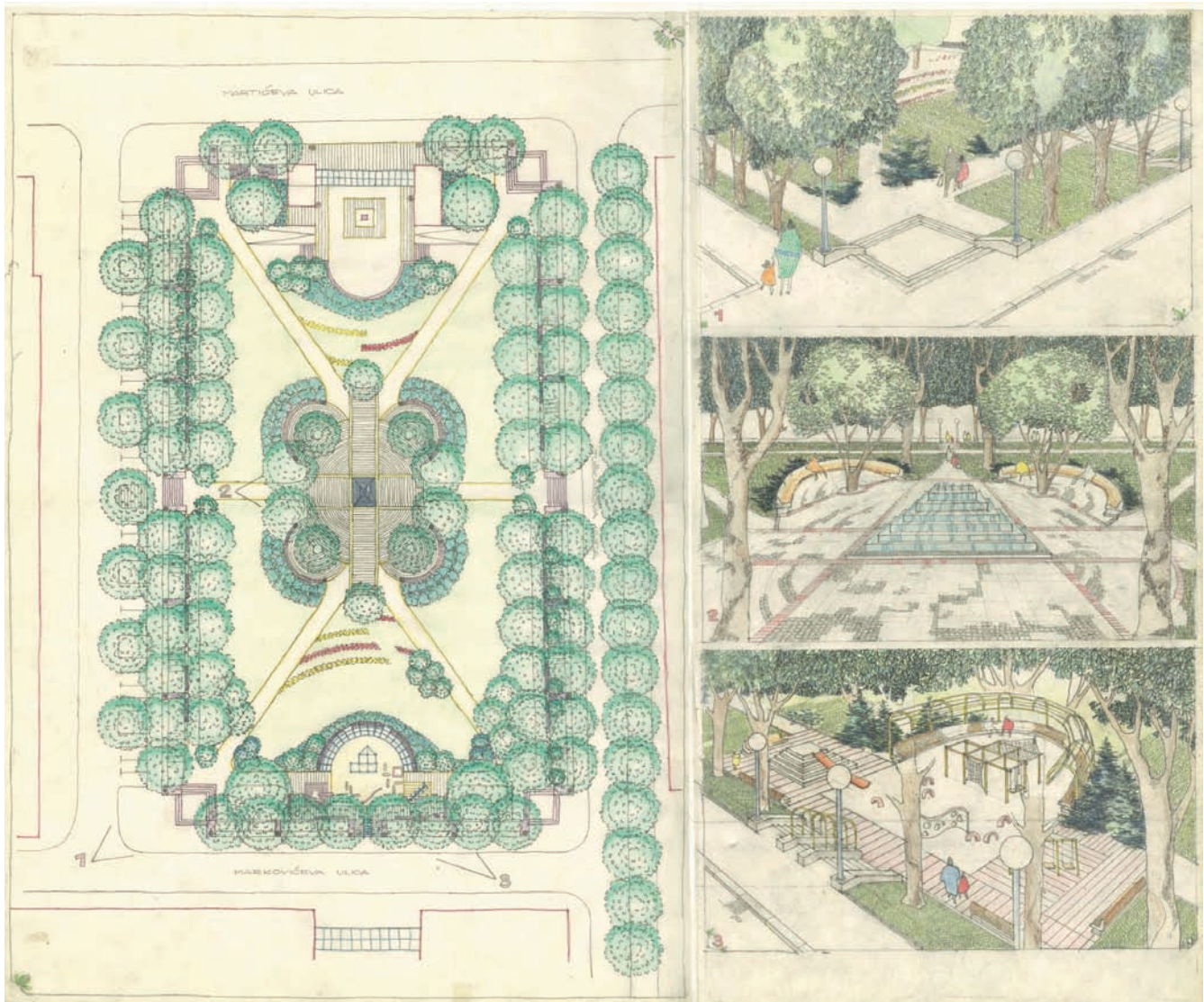
CULTURAL LANDSCAPES

CULTURAL LANDSCAPES OF LITTORAL CROATIA
41 (1 poster 60x140 / original poster - 47th ZAGREB SALON)

43 **BOOKS**
44 **BROCHURES AND PROCEEDINGS**

45 **EPILOGUE**
47 **EXHIBITION LAYOUT**





Branka Aničić: originalni crtež / original drawing (69,5/58,5), 1989

PARK BARTOLA KAŠIĆA (KVATERNIKOV TRG) - ZAGREB

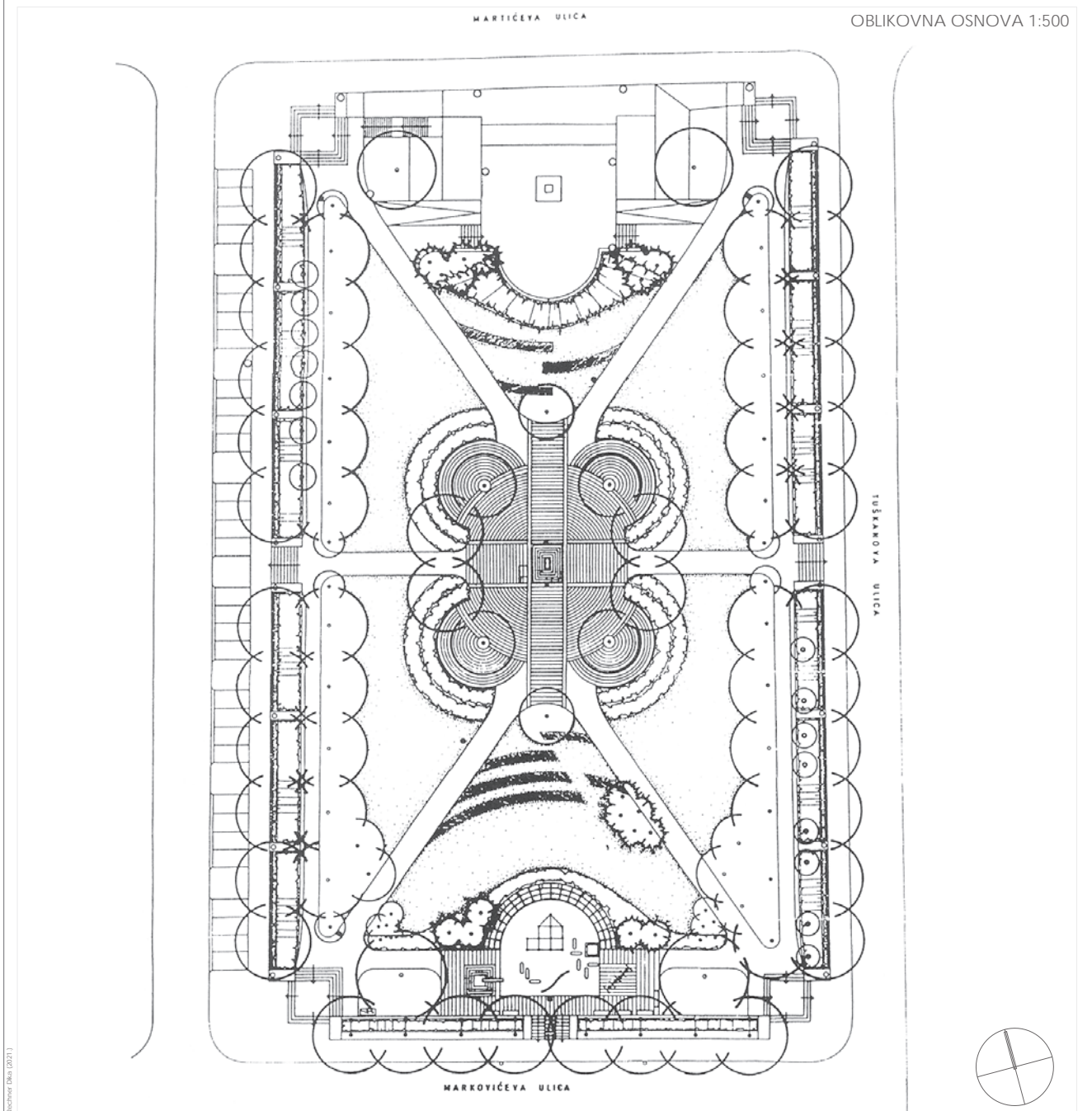
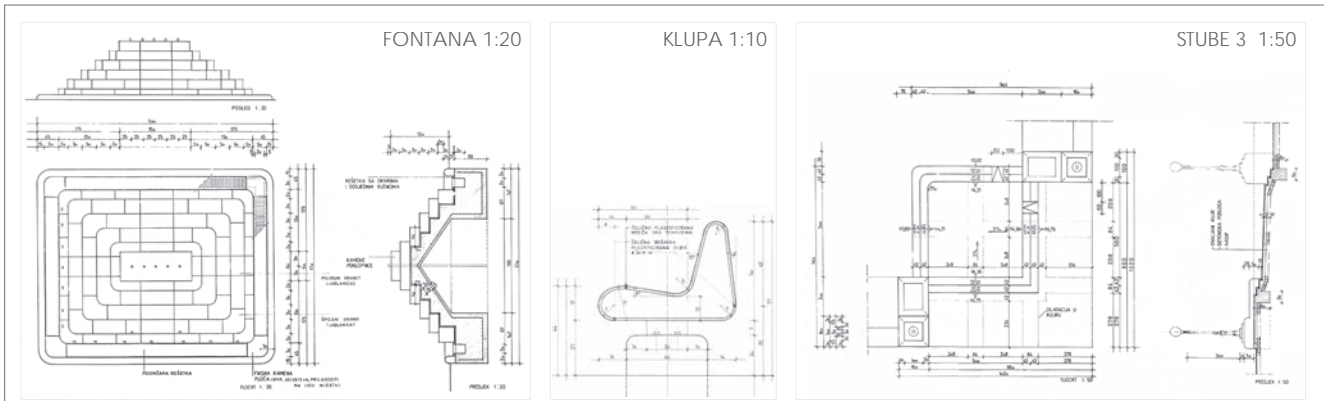
glavni i izvedbeni projekt, 1989. / izvedeno 1993.

autor: Branka Aničić; suradnici: Vesna Koščak, Zoran Hebar

BARTOL KAŠIĆ PARK (KVATERNIK SQUARE) - ZAGREB

main and construction design, 1989 / built 1993

author: Branka Aničić; associates: Vesna Koščak, Zoran Hebar



PARK BARTOLA KAŠIĆA (KVATERNIKOV TRG) - ZAGREB

glavni i izvedbeni projekt, 1989. / izvedeno 1993.
 autor: Branka Aničić; suradnici: Vesna Koščak, Zoran Hebar

BARTOL KAŠIĆ PARK (KVATERNIK SQUARE) - ZAGREB

main and construction design, 1989 / built 1993
 author: Branka Aničić; associates: Vesna Koščak, Zoran Hebar



PARK BARTOLA KAŠIČA (KVATERNIKOV TRG) - ZAGREB

glavni i izvedbeni projekt, 1989 / izvedeno 1993

autor: Branka Aničić; suradnici: Vesna Koščak, Zoran Hebar

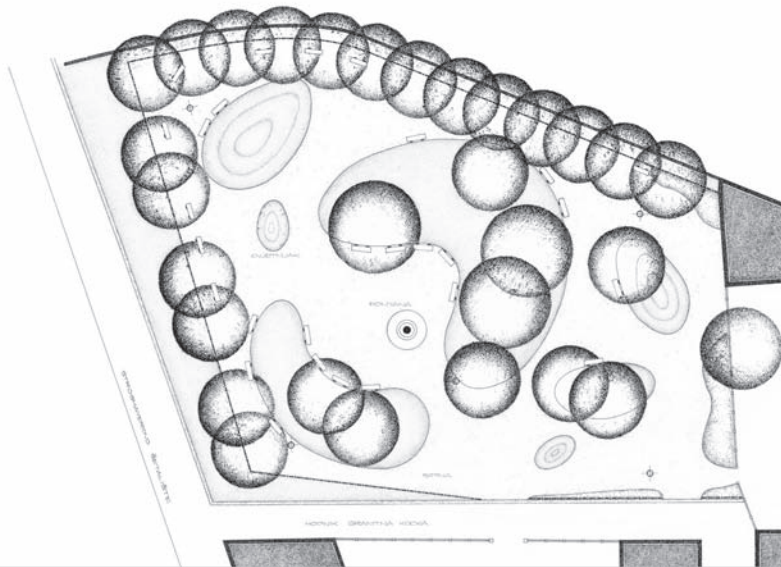
Google

BARTOL KAŠIĆ PARK (KVATERNIK SQUARE) - ZAGREB

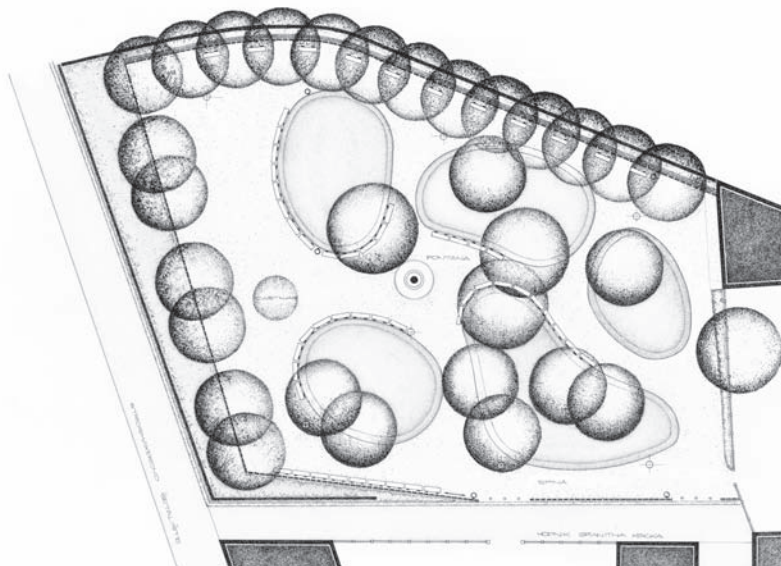
main and construction design, 1989 / built 1993

author: Branka Aničić; associates: Vesna Koščak, Zoran Hebar

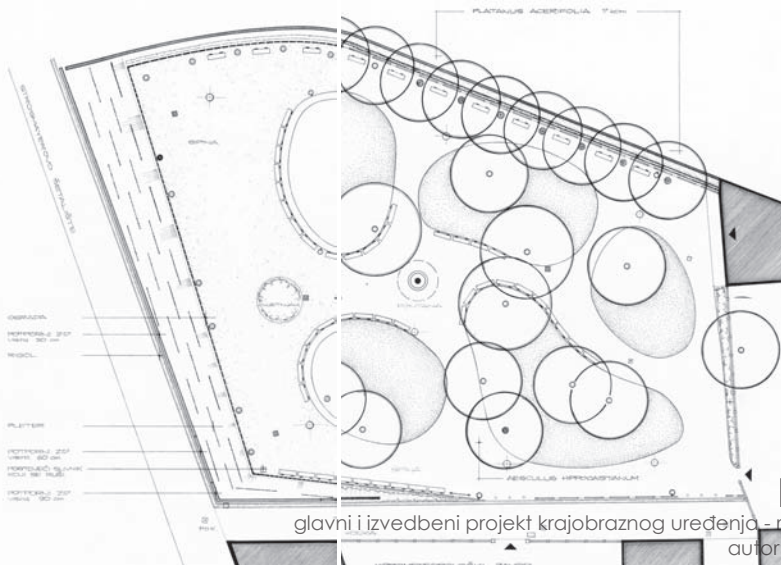
VARIJANTNO RJEŠENJE
OBLIKOVNA OSNOVA 1:200



USVOJENO RJEŠENJE
OBLIKOVNA OSNOVA 1:200



UREĐAJNA OSNOVA // PLAN SADNJE 1:200



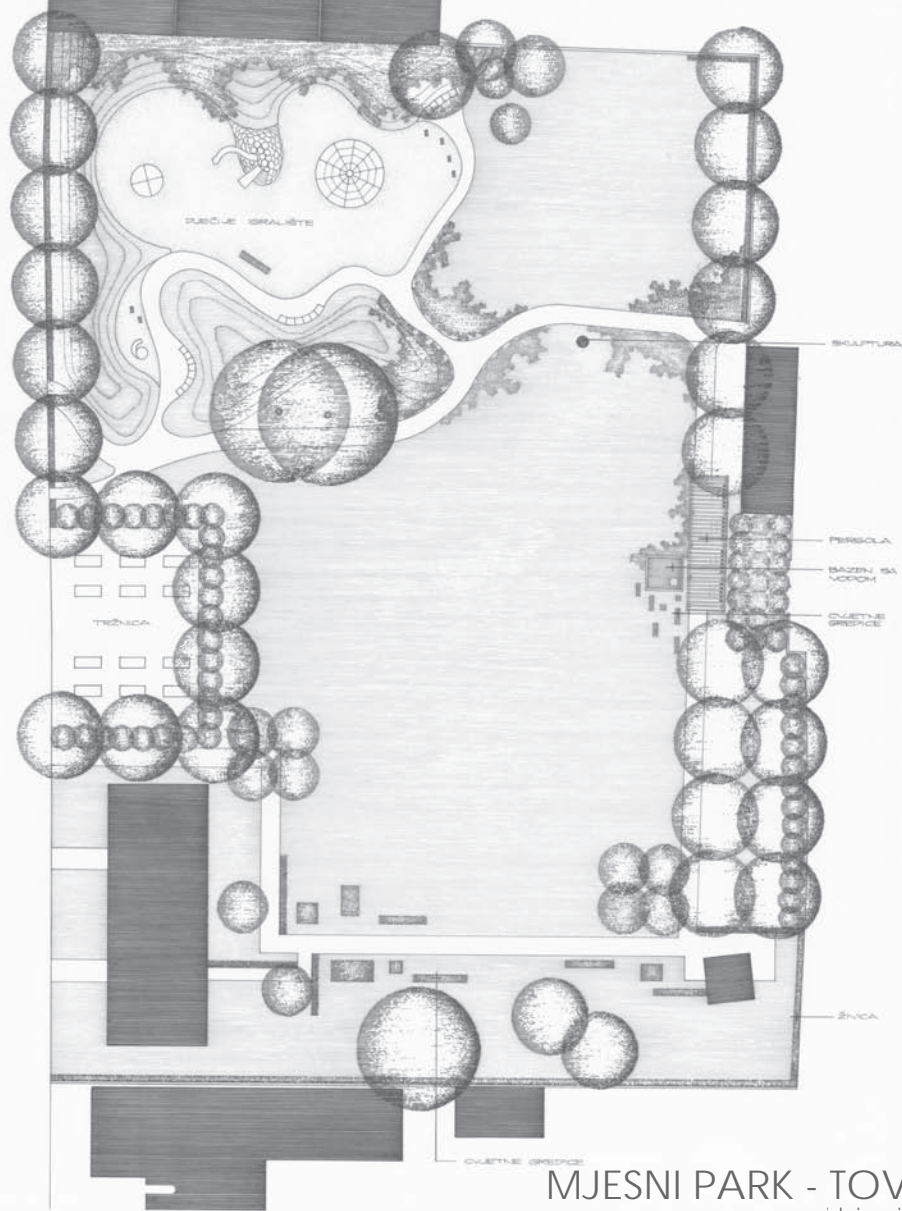
glavni i izvedbeni projekt krajobraznog uređenja – restauracija parka, 2001. / izvedeno 2004.
autor: Branka Aničić; suradnik: Petra Pereković

PARK GRIČ - ZAGREB

GRIČ PARK - ZAGREB

main and construction landscape design – park restoration, 2001 / built 2004
author: Branka Aničić; associate: Petra Pereković

OBLIKOVNA OSNOVA 1:200



MJESNI PARK - TOVARNIK

idejno rješenje, 2001.

autor: Branka Aničić; suradnik: Petra Pereković

Plan: Studio Štorgašek, vo. Bečević (2001)

TOVARNIK CITY PARK

conceptual design, 2001

author: Branka Aničić; associate: Petra Pereković



SITUACIJA 1:1000



POGLED 1:200



POGLED 1:200

OBLIKOVNA OSNOVA 1:200



KAZALIŠNI PARK - RIJEKA

državni, javni, opći natječaj 2003./ pozvani autor – II NAGRADA
 autori: Branka Aničić, Dušan Ogrin; suradnici: Iva Rechner, Grega Kosem

THEATRE PARK - RIJEKA

state, public, general competition 2003/ invited author – 2nd PRIZE
 authors: Branka Aničić, Dušan Ogrin; associates: Iva Rechner, Grega Kosem



OBLIKOVNA OSNOVA 1:500



PARK - PUČKO OTVORENO UČILIŠTE - VELIKA GORICA

idejni i izvedbeni projekt, 2004./ izvedeno 2005.

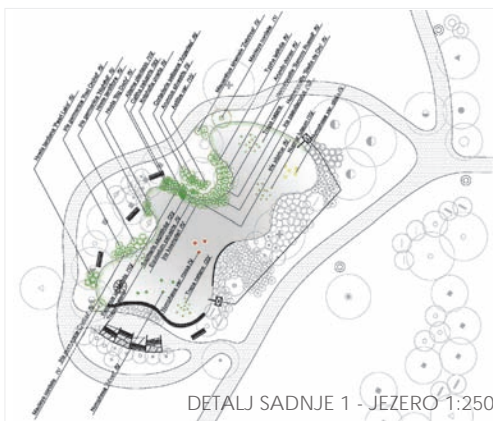
autori: Branka Aničić, Dušan Ogrin; suradnici: Grega Kosem, Petra Pereković

OPEN COMMUNITY COLLEGE PARK- VELIKA GORICA

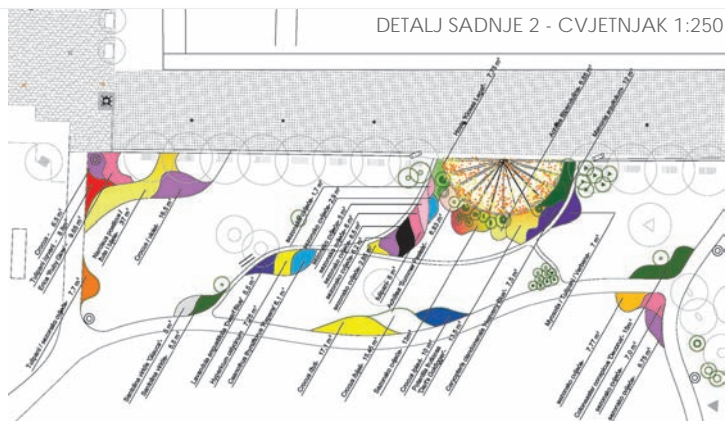
conceptual and construction design, 2004/ built 2005

authors: Branka Aničić, Dušan Ogrin; associates: Grega Kosem, Petra Pereković

oblik: Dorotej Štregar, arh. i inženjeri d.o.o. (2021.); fotografija: DCSU (2005.)



DETALJ SADNJE 1 - JEZERO 1:250



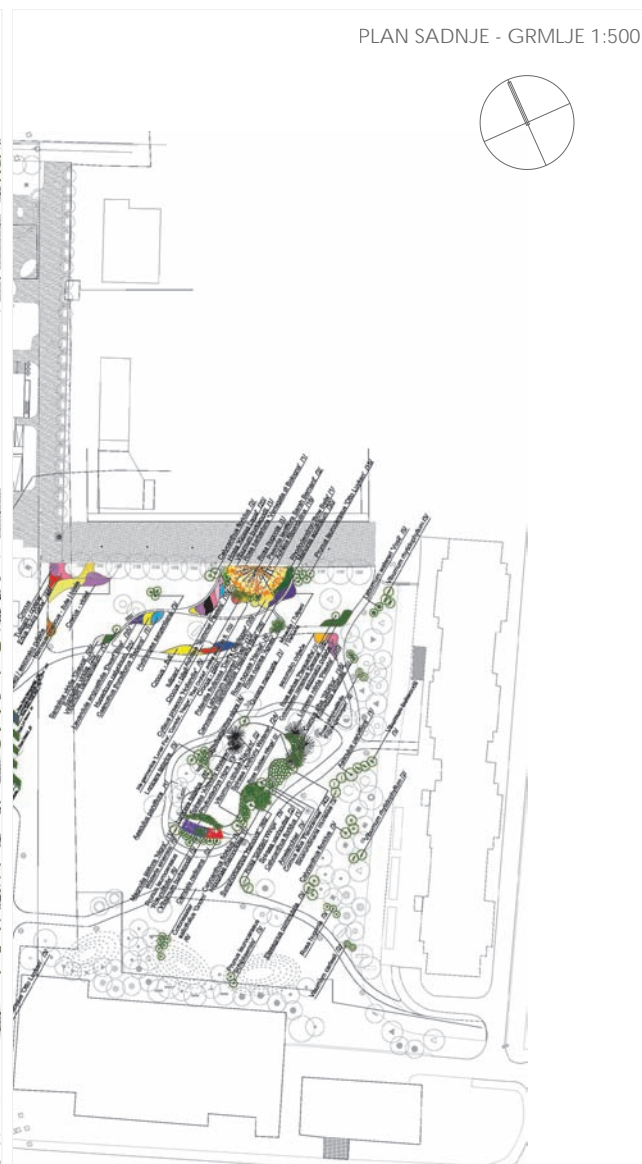
DETALJ SADNJE 2 - CVJETNJAK 1:250



PLAN SADNJE - STABLA 1:500



PLAN SADNJE - GRMLJE 1:500



PARK - PUČKO OTVORENO UČILIŠTE - VELIKA GORICA

idejni i izvedbeni projekt, 2004./ izvedeno 2005.

autori: Branka Aničić, Dušan Ogrin; suradnici: Grega Kosem, Petra Pereković

oblik: Doroteo Štregar, na Rechner dno (2021), fotografija: DCSJ (2003)

OPEN COMMUNITY COLLEGE PARK- VELIKA GORICA

conceptual and construction design, 2004/ built 2005

authors: Branka Aničić, Dušan Ogrin; associates: Grega Kosem, Petra Pereković



PARK - PUČKO OTVORENO UČILIŠTE - VELIKA GORICA

idejni i izvedbeni projekt, 2004./ izvedeno 2005.

autori: Branka Aničić, Dušan Ogrin; suradnici: Grega Kosem, Petra Pereković

OPEN COMMUNITY COLLEGE PARK- VELIKA GORICA

conceptual and construction design, 2004/ built 2005

authors: Branka Aničić, Dušan Ogrin; associates: Grega Kosem, Petra Pereković



PARK - PUČKO OTVORENO UČILIŠTE - VELIKA GORICA

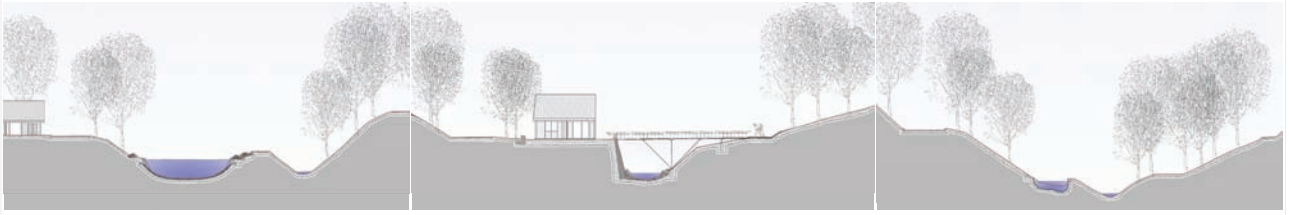
idejni i izvedbeni projekt, 2004./ izvedeno 2005.

autori: Branka Aničić, Dušan Ogrin; suradnici: Grega Kosem, Petra Pereković

OPEN COMMUNITY COLLEGE PARK- VELIKA GORICA

conceptual and construction design, 2004/ built 2005

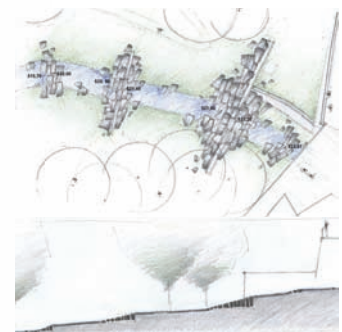
authors: Branka Aničić, Dušan Ogrin; associates: Grega Kosem, Petra Pereković



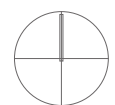
PRESJECI 1:250



OBLIKOVNA OSNOVA 1:250



DETALJ SLAPA



PARK PRIRODE MEDVEDNICA - KRALJIČIN ZDENAC - ZAGREB

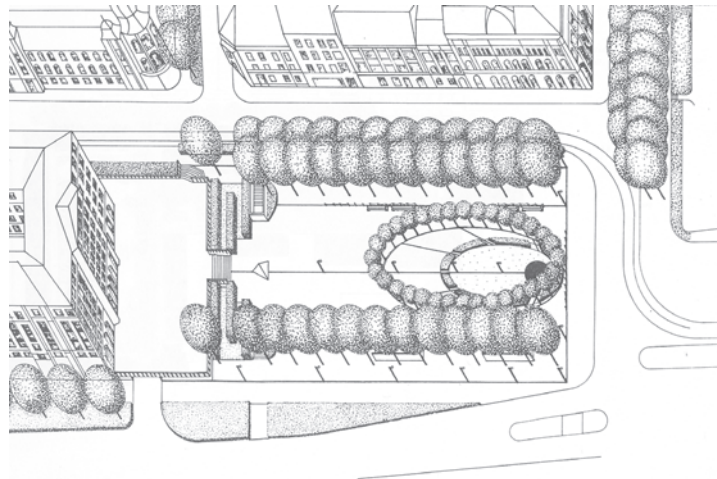
elaborat za krajobrazno uređenje, 2012.

autor: Branka Aničić; konzultant: Vinko Penezić; suradnici: Martina Čipčić Bragadin, Petra Pereković

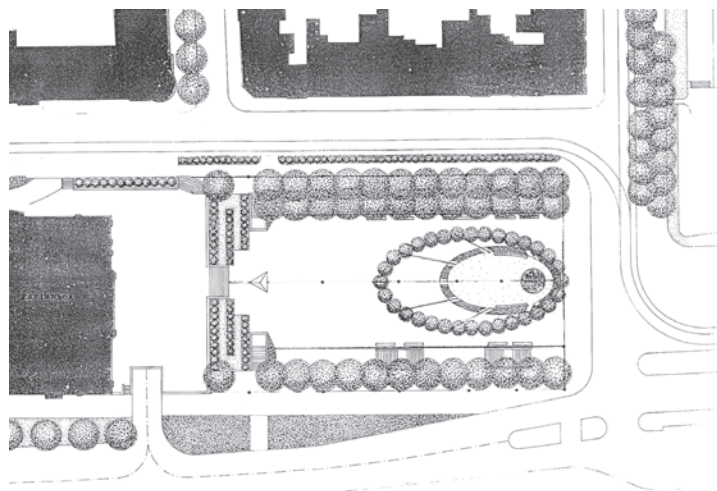
MEDVEDNICA NATURE PARK – THE QUEEN’S WELL - ZAGREB

study for landscape design, 2012

author: Branka Aničić; consultant: Vinko Penezić; associates: Martina Čipčić Bragadin, Petra Pereković



AKSONOMETRIJA



OBLIKOVNA OSNOVA 1:500



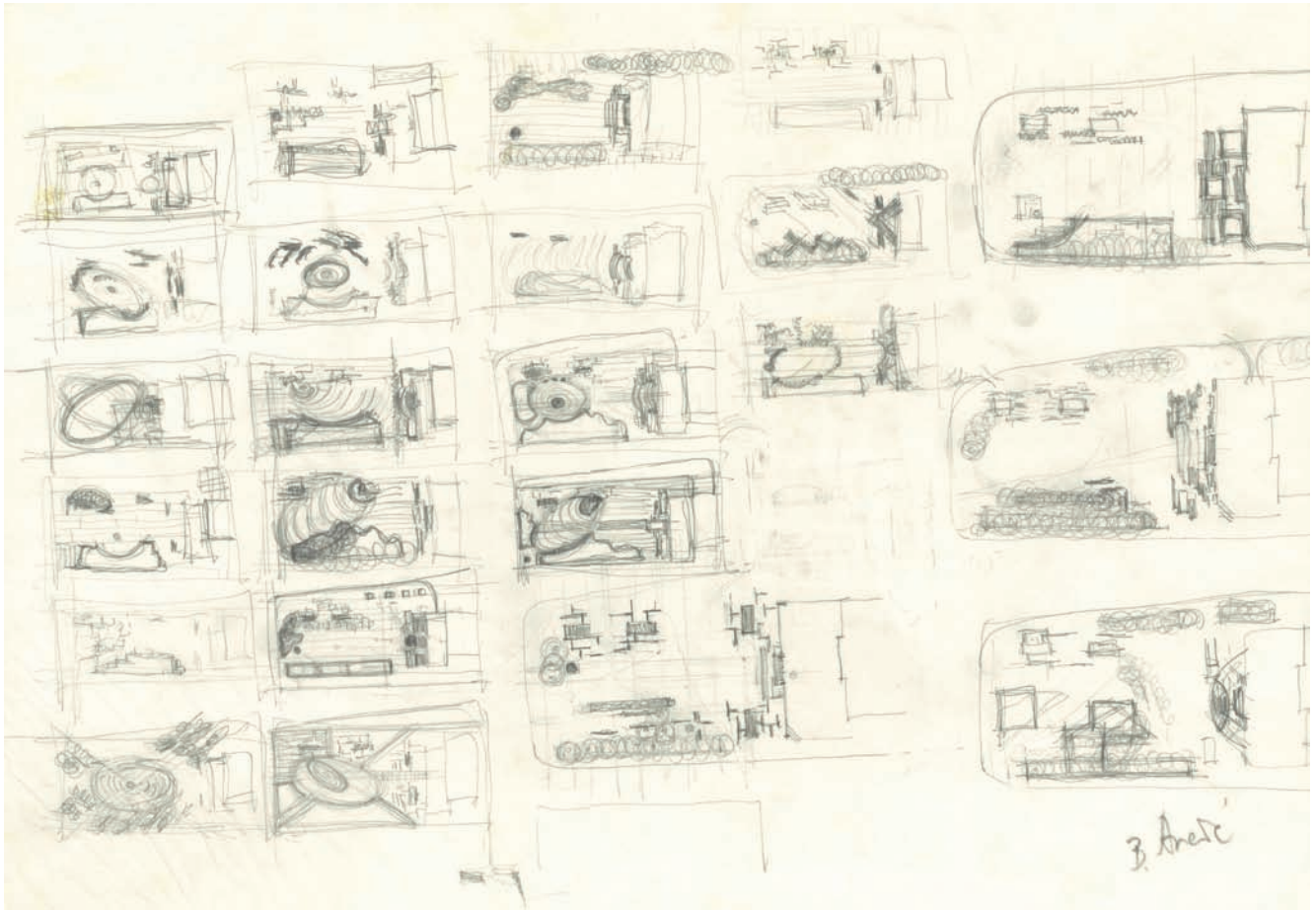
TRG ANTE STARČEVIĆA - ZAGREB

idejni projekt (inicijativa autora), 1992.
autor: Branka Aničić

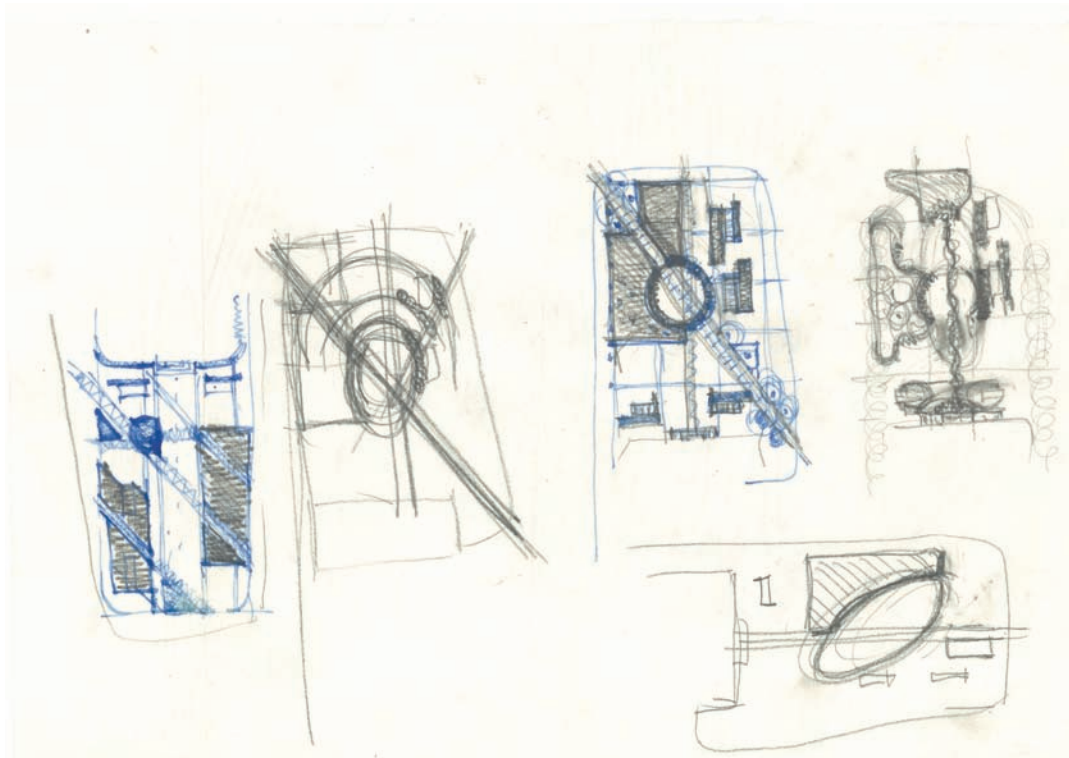
Zagreb, Starčević Starčević, via Rechner (Dina), (2011)

ANTE STARČEVIĆ SQUARE - ZAGREB

conceptual design (author's initiative) 1992
author: Branka Aničić



Branka Aničić: originalne skice / original sketches, 1992

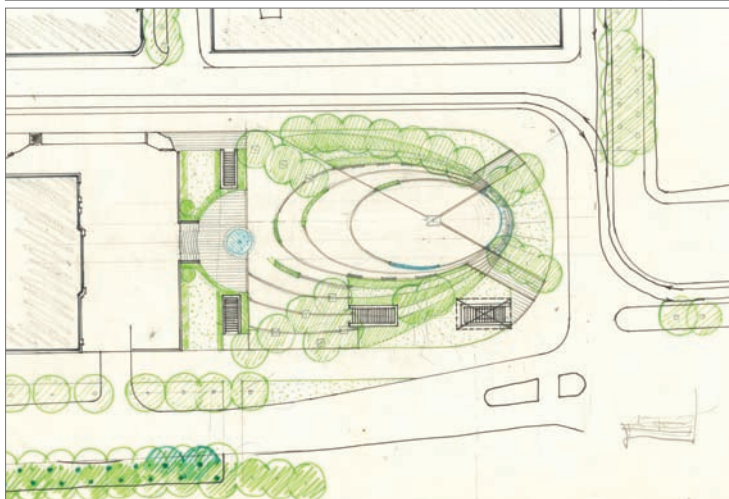
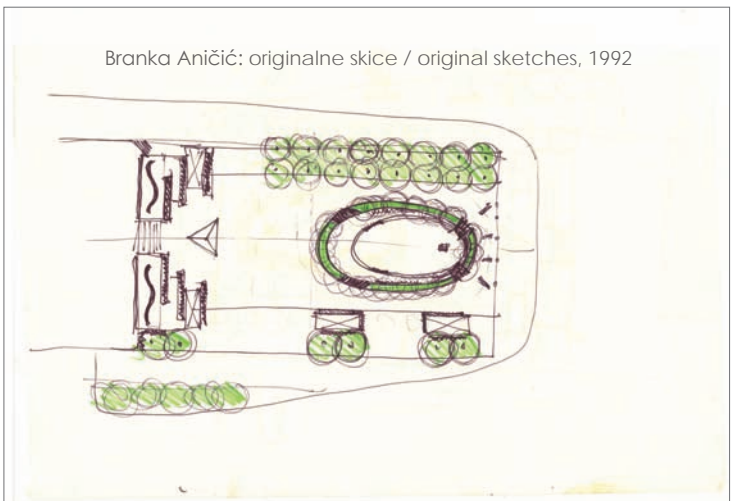
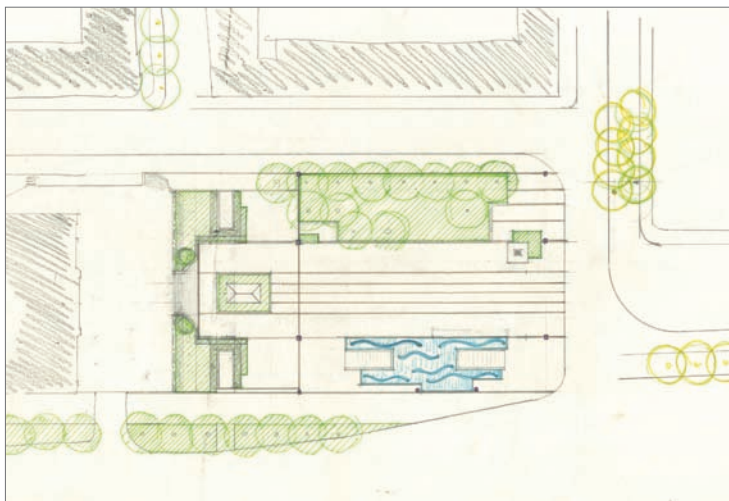
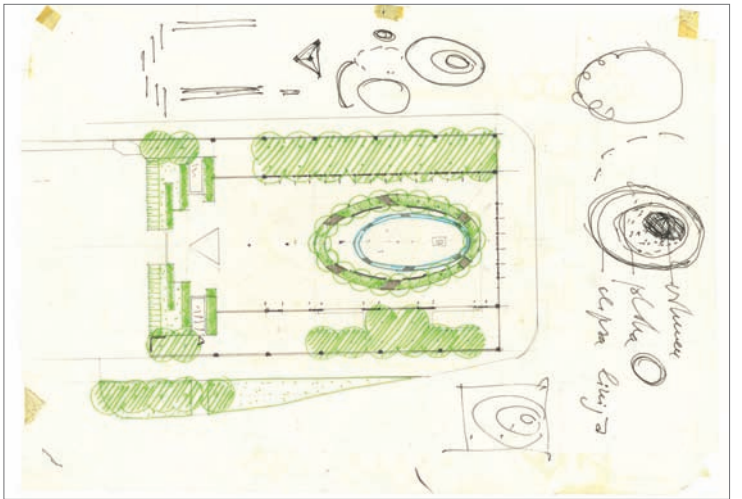
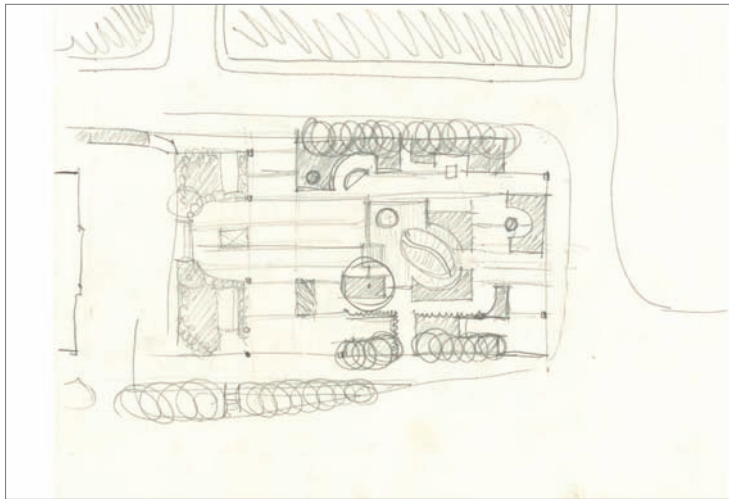
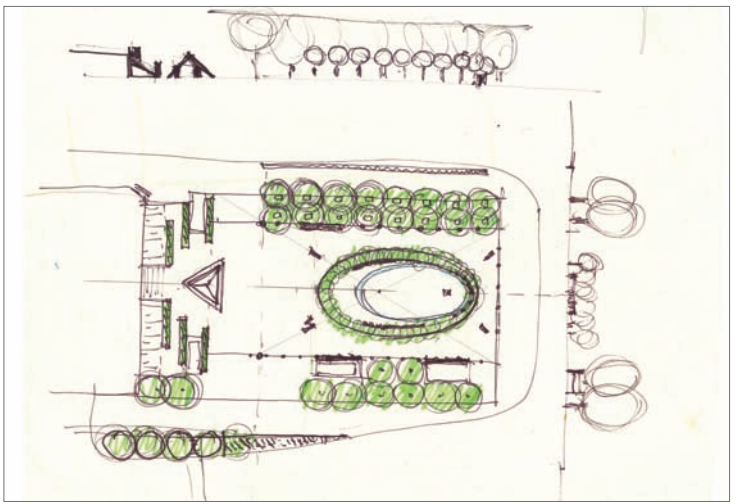
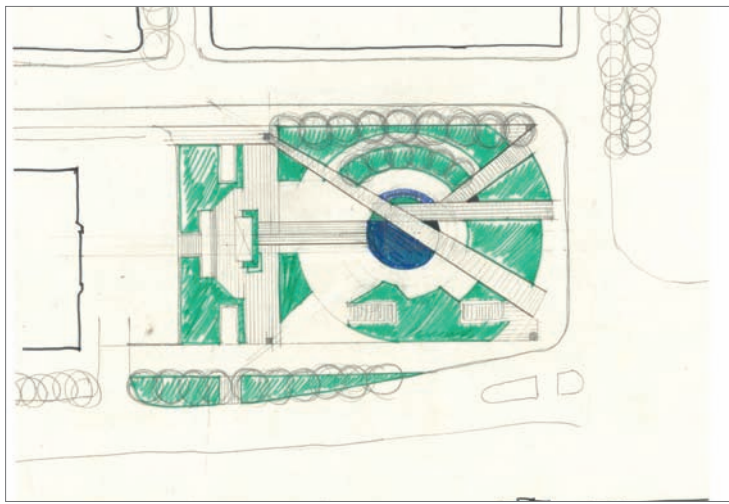


TRG ANTE STARČEVIĆA - ZAGREB

idejni projekt (inicijativa autora), 1992.
 autor: Branka Aničić

ANTE STARČEVIĆ SQUARE - ZAGREB

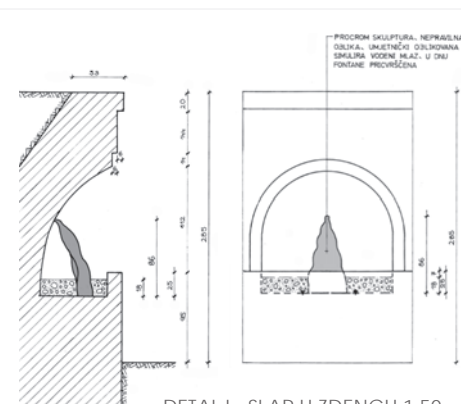
conceptual design (author's initiative) 1992
 author: Branka Aničić



Branka Aničić: originalne skice / original sketches, 1992


TRG ANTE STARČEVIĆA - ZAGREB
idejni projekt (inicijativa autora), 1992.
autor: Branka Aničić


ANTE STARČEVIĆ SQUARE - ZAGREB
conceptual design (author's initiative) 1992
author: Branka Aničić



PROCIOM SKULPTURA, NEPRASNA OBLIKA, UMJETNIČO DIZAJNIRANA DA SKULPTURA VODNE NELEŽI U OBU FONTANE PRODUŠENA

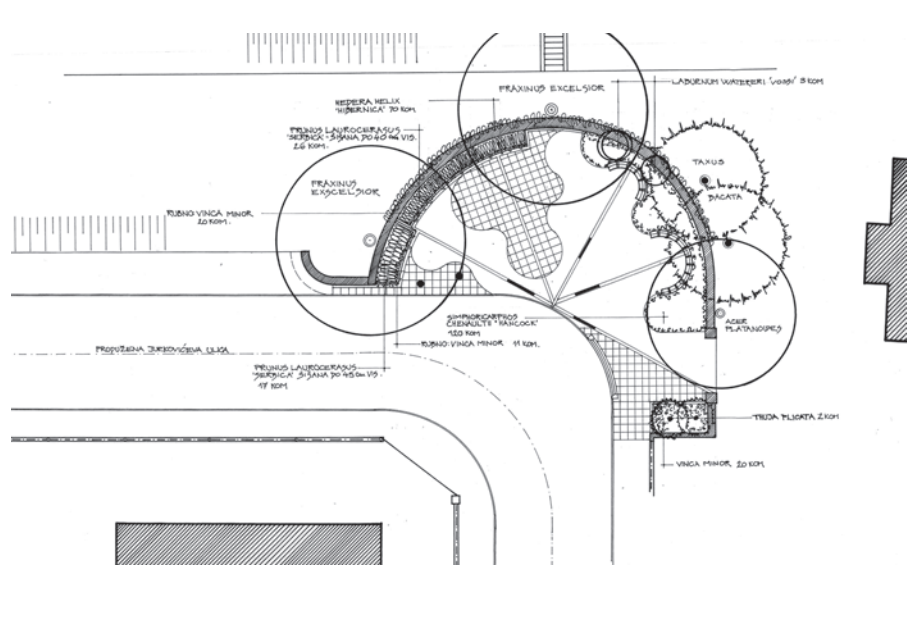
DETALJ - SLAP U ZDENCU 1:50





OPLOČENJE 1:100

OBLIKOVNA OSNOVA S PLANOM SADNJE 1:100

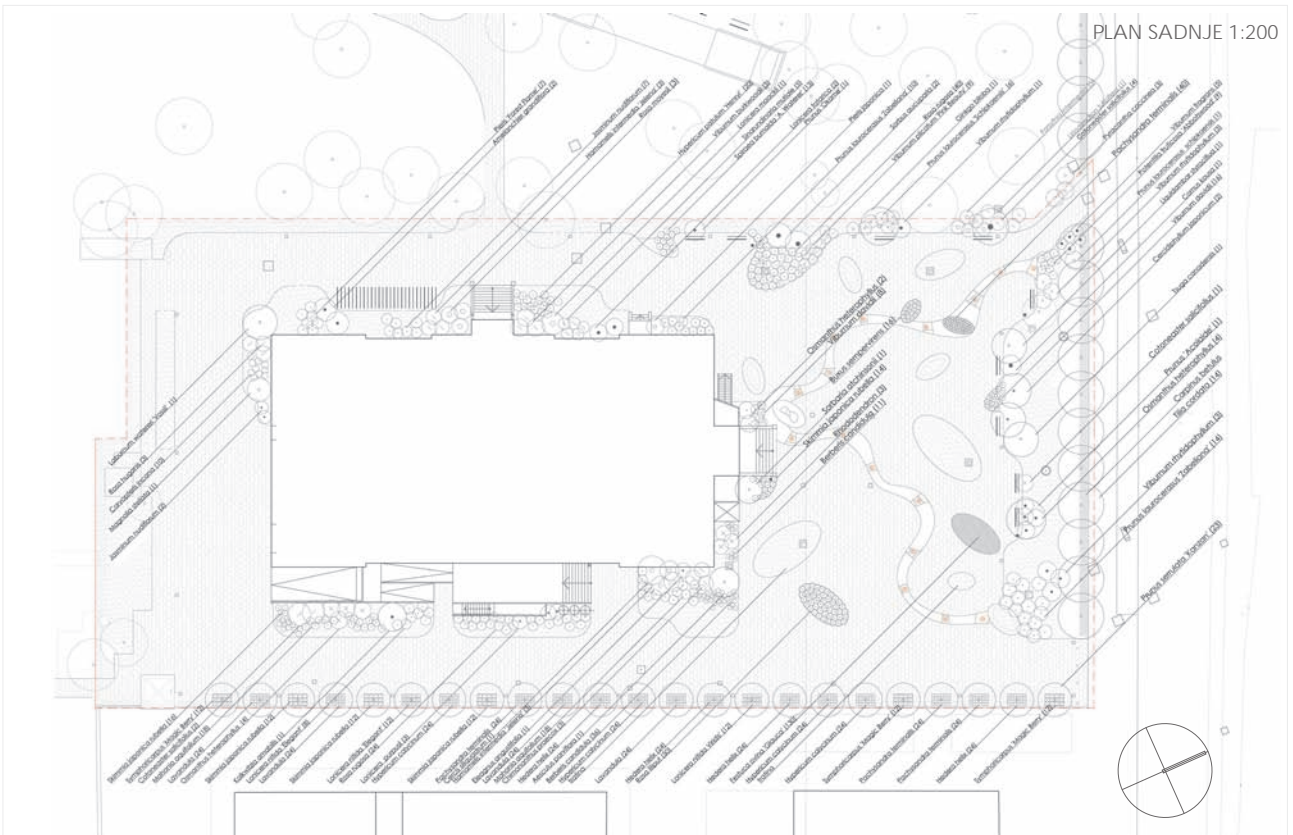
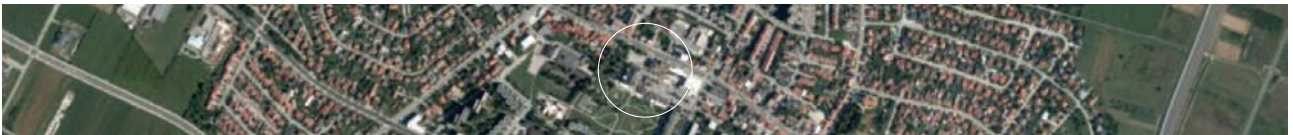


JURKOVIĆEVA ULICA - ZAGREB
 idejni i izvedbeni projekt, 1999. / djelomično izvedeno 2000.
 autor: Branka Aničić

izv. Branka Aničić, arh. Branka Aničić, 2001. Ulogo: Branka Aničić



OBLIKOVNA OSNOVA 1:200



PLAN SADNJE 1:200

TRG - PUČKO OTVORENO UČILIŠTE - VELIKA GORICA

idejni i izvedbeni projekt, 2004./ izvedeno 2005.

autori: Branka Aničić, Dušan Ogrin; suradnici: Iva Rechner, Grega Kosem

oblik: Dorotea Štegrušek, Iva Rechner, Dušan Ogrin (2021.); fotografija: DCCU (2020.)

OPEN COMMUNITY COLLEGE SQUARE- VELIKA GORICA

conceptual and construction design, 2004/ built 2005

authors: Branka Aničić, Dušan Ogrin; associates: Iva Rechner, Grega Kosem



design: Boris Sagrada, volobrdar, d.o.o. [2021], fotografiranje: Anđel, 2007.

TRG - PUČKO OTVORENO UČILIŠTE - VELIKA GORICA
idejni i izvedbeni projekt, 2004./ izvedeno 2005.
autori: Branka Aničić, Dušan Ogrin; suradnici: Iva Rechner, Grega Kosem

OPEN COMMUNITY COLLEGE SQUARE- VELIKA GORICA
conceptual and construction design, 2004/ built 2005
authors: Branka Aničić, Dušan Ogrin; associates: Iva Rechner, Grega Kosem



TRG - PUČKO OTVORENO UČILIŠTE - VELIKA GORICA

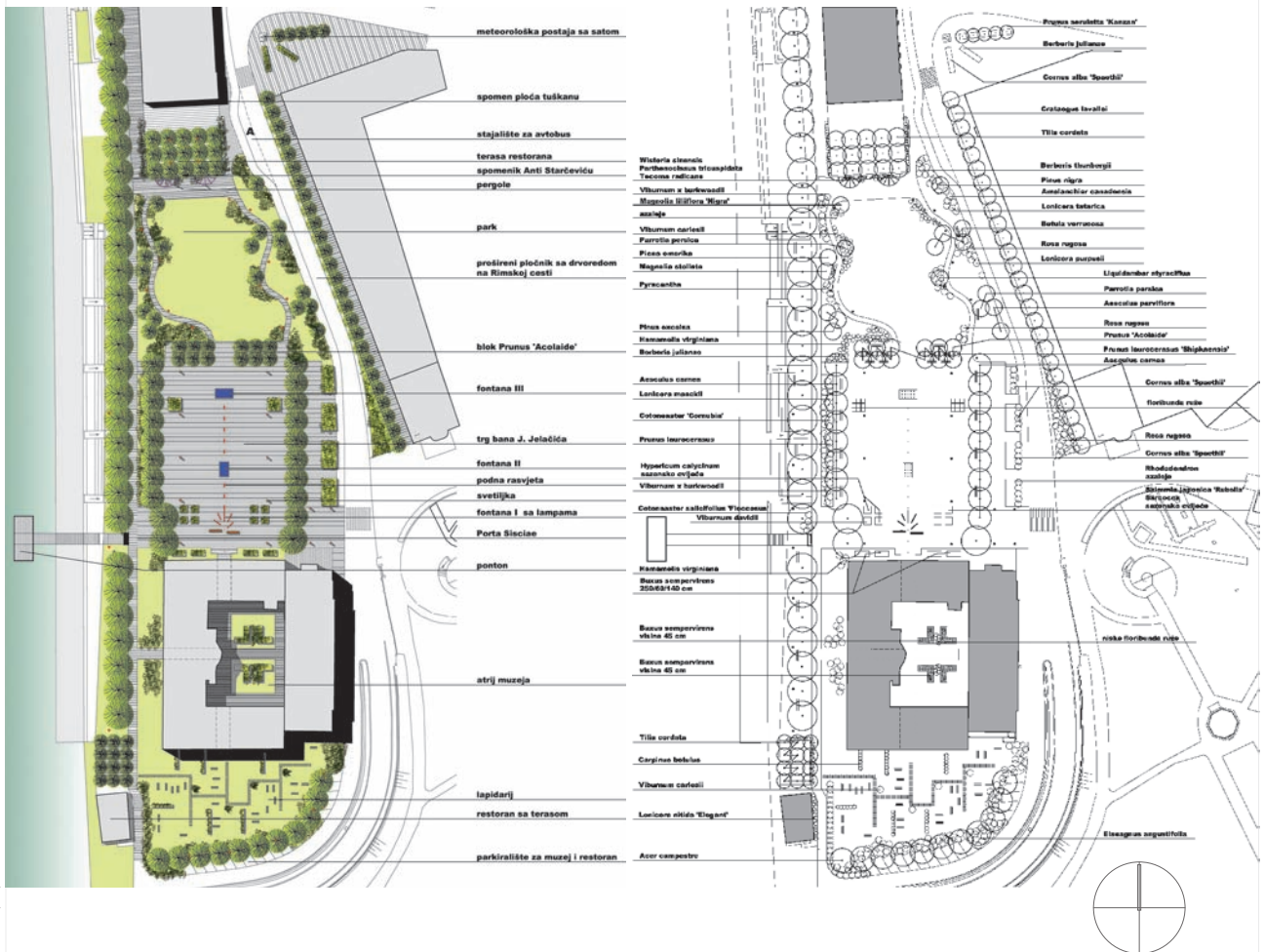
idejni i izvedbeni projekt, 2004 / izvedeno 2005.

autori: Branka Aničić, Dušan Ogrin; suradnici: Iva Rechner, Grega Kosem

OPEN COMMUNITY COLLEGE SQUARE- VELIKA GORICA

conceptual and construction design, 2004/ built 2005

authors: Branka Aničić, Dušan Ogrin; associates: Iva Rechner, Grega Kosem

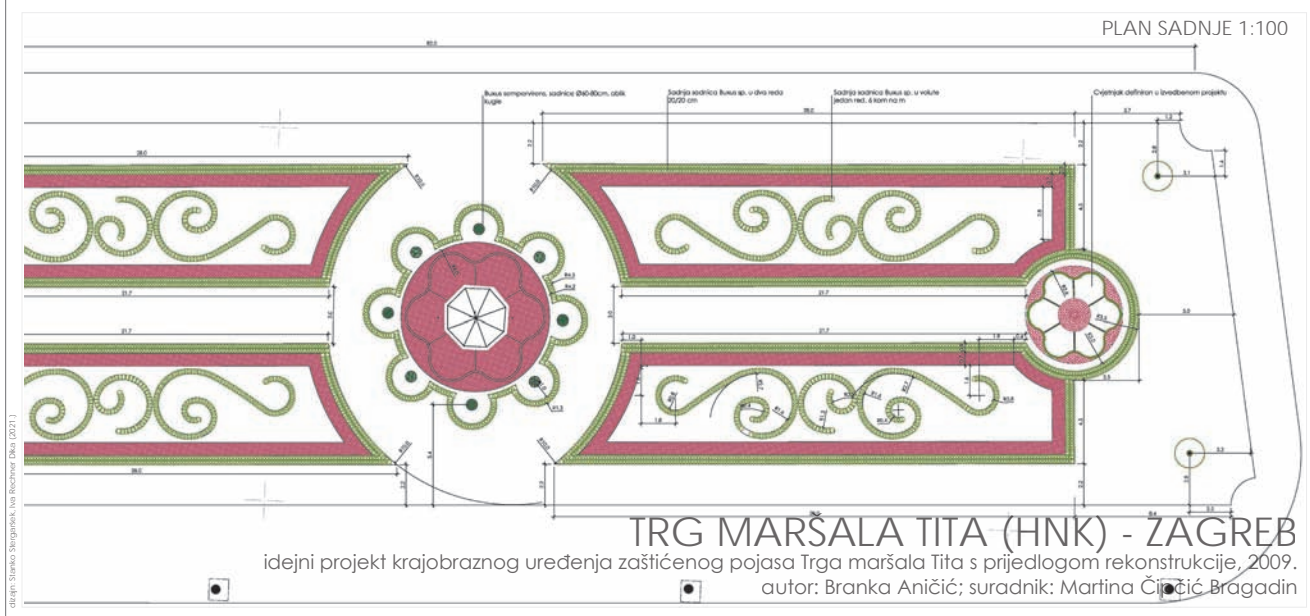
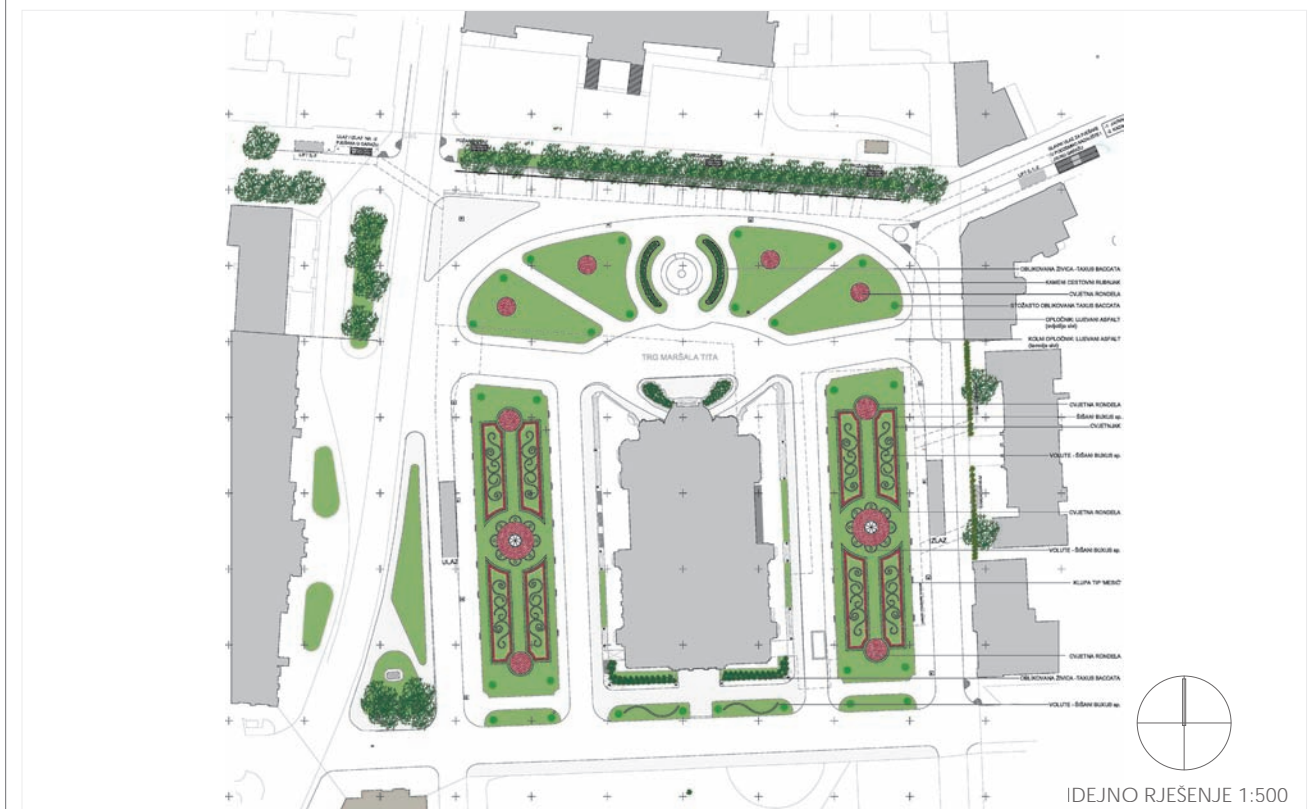
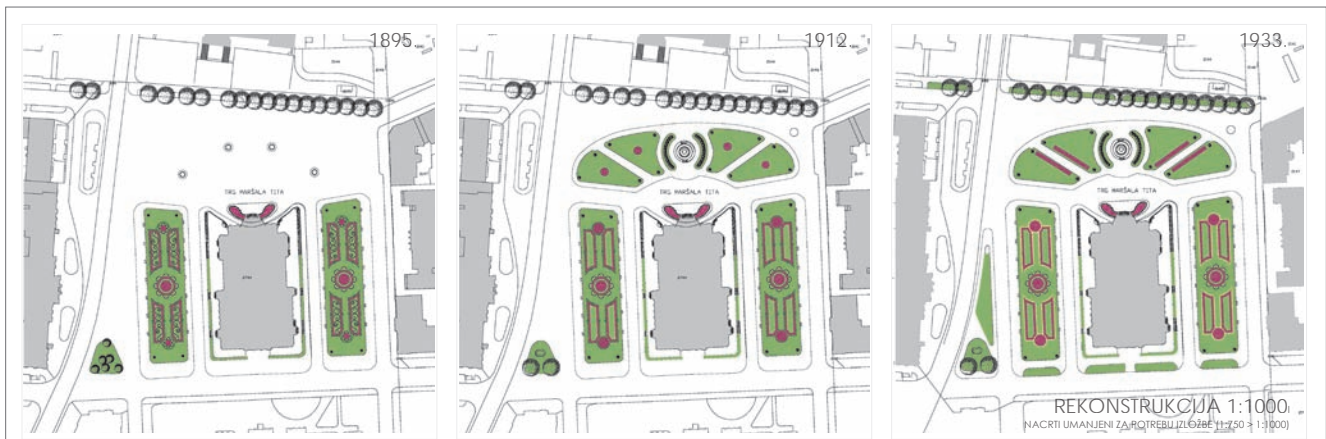


TRG BANA JOSIPA JELAČIĆA - SISAK

idejno rješenje - javni i anonimni natječaj, 2006.
 autori: Branka Aničić, Dušan Ogrin; suradnik: Grega Kosem

BAN JOSIP JELAČIĆ SQUARE – SISAK

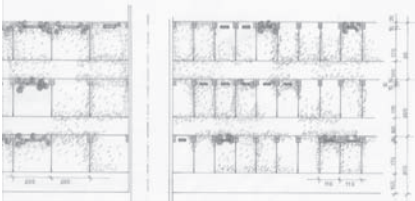
conceptual design – public and anonymous competition, 2006
 authors: Branka Aničić, Dušan Ogrin; associate: Grega Kosem



TRG MARŠALA TITA (HNK) - ZAGREB
 idejni projekt krajobraznog uređenja zaštićenog pojasa Trga maršala Tita s prijedlogom rekonstrukcije, 2009.
 autor: Branka Aničić; suradnik: Martina Čipčić Bragadin

MARSHAL TITO SQUARE (CROATIAN NATIONAL THEATRE) – ZAGREB
 conceptual design of Marshal Tito Square protected area with reconstruction proposal, 2009
 author: Branka Aničić; associate: Martina Čipčić Bragadin

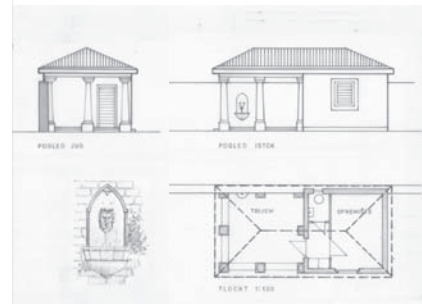
GROBNA POLJA 1:100



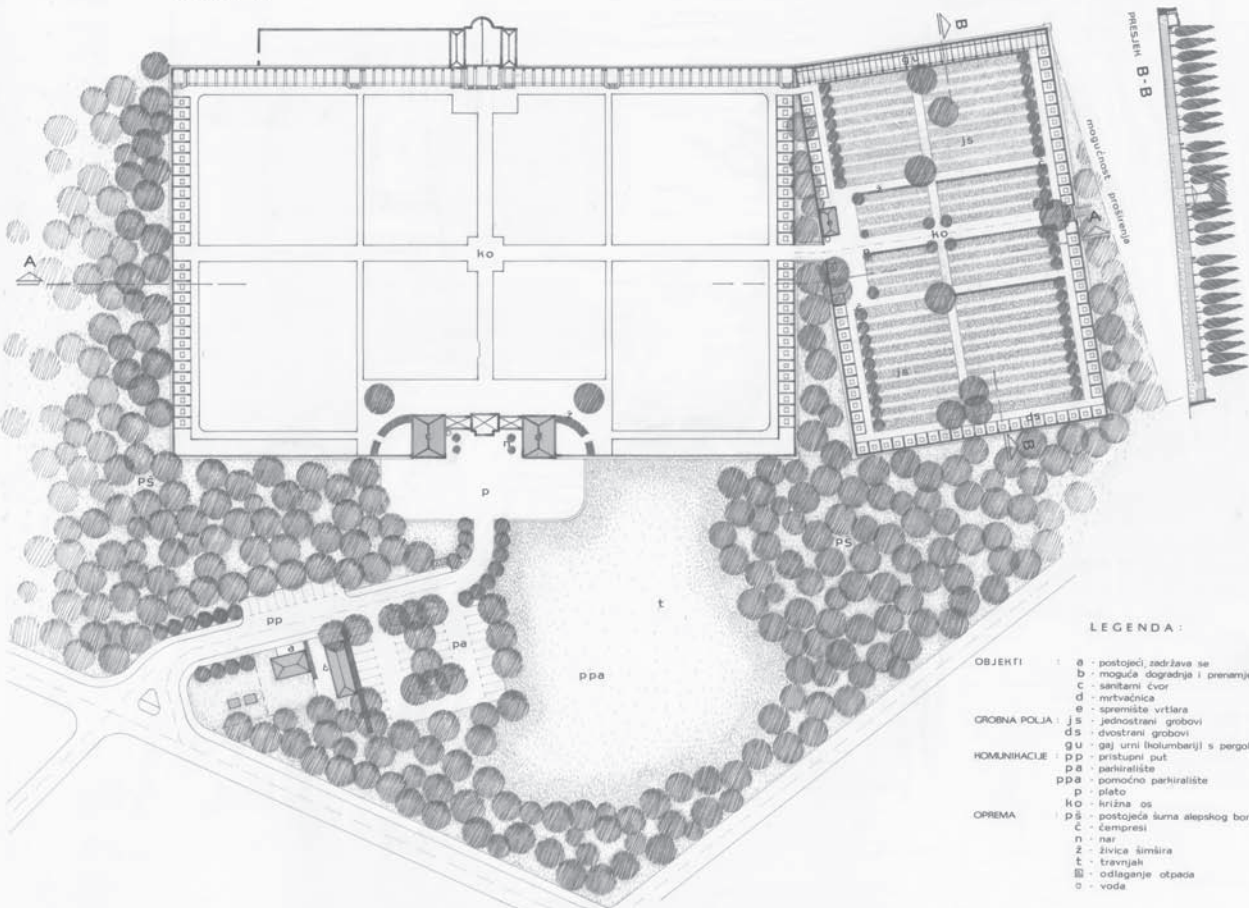
PERGOLA / URNE 1:50



POMOĆNI OBJEKT 1:100



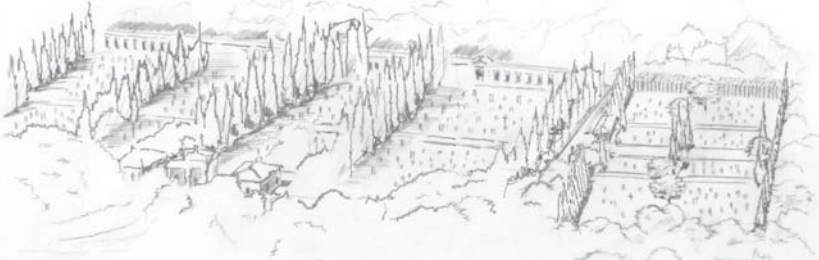
PRESJEH A-A



LEGENDA :

- OBJEKTI : a - postojeći, zadržava se
- b - moguća dogradnja i prenamjena
- c - sanitarni čvor
- d - mreža voda
- e - spremište vrtlara
- GROBNA POLJA : js - jednostrani grobovi
- ds - dvostrani grobovi
- gu - gaj urni kolonijalnih s pergolom
- HOMINIJACIJE : pp - pristupni put
- pa - parkiralište
- ppa - pomoćno parkiralište
- p - plato
- ko - križna os
- OPREMA : ps - postojeća luma alepskog bora
- c - čempresi
- n - nar
- z - živice šimira
- t - travnjak
- e - odlaaganje otpada
- v - voda

PERSPEKTIVA



OBLIKOVNA OSNOVA 1:500



GROBLJE - ROVINJ

idejno rješenje obnove i proširenja - anketni, opći, javni i anonimni natječaj, 1992. - I NAGRADA
 autor: Branka Aničić; konzultant: Lido Sošić; suradnici: Vesna Koščak, Robert Duić

CEMETERY - ROVINJ

renovation and expansion conceptual design - survey, general, public and anonymous competition, 1992 - 1st PRIZE
 author: Branka Aničić; consultant: Lido Sošić; associates: Vesna Koščak, Robert Duić

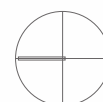


KUŠANEC CEMETERY - VELIKA GORICA

conceptual design, 2004/ construction design, 2008/ partially built
 authors: Dušan Ogrin, Branka Aničić; associates: Grega Kosem, Petra Pereković (construction design)



PLAN SADNJE 1:500



GROBLJE KUŠANEC - VELIKA GORICA

idejni projekt, 2004./ izvedbeni projekt, 2008./ djelomično izvedeno
 autori: Dušan Ogrin, Branka Aničić; suradnici: Grega Kosem, Petra Pereković (izvedbeni proj.)

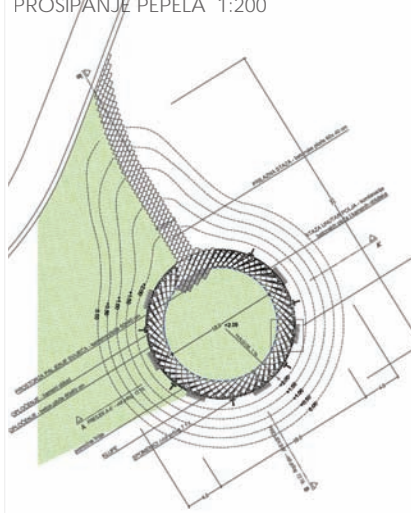
KUŠANEC CEMETERY - VELIKA GORICA

conceptual design, 2004/ construction design, 2008/ partially built
 authors: Dušan Ogrin, Branka Aničić; associates: Grega Kosem, Petra Pereković (construction design)

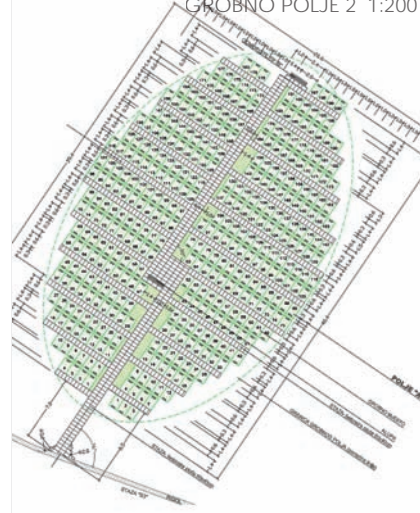
GROBNO POLJE 1 1:200



PROSIPANJE PEPELA 1:200



GROBNO POLJE 2 1:200



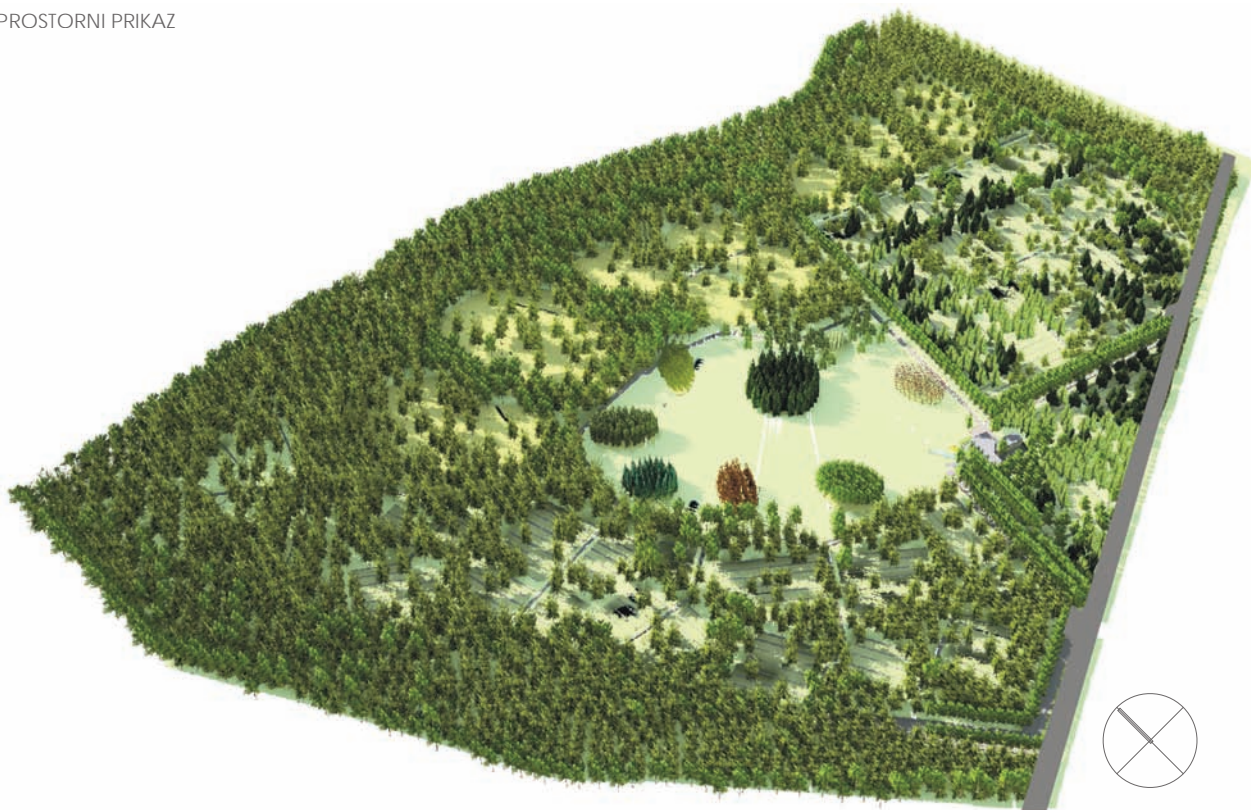
GROBNO POLJE 3 1:200



GROBNO POLJE 4 1:200



PROSTORNI PRIKAZ



GROBLJE KUŠANEC - VELIKA GORICA

idejni projekt, 2004./ izvedbeni projekt, 2008./ djelomično izvedeno

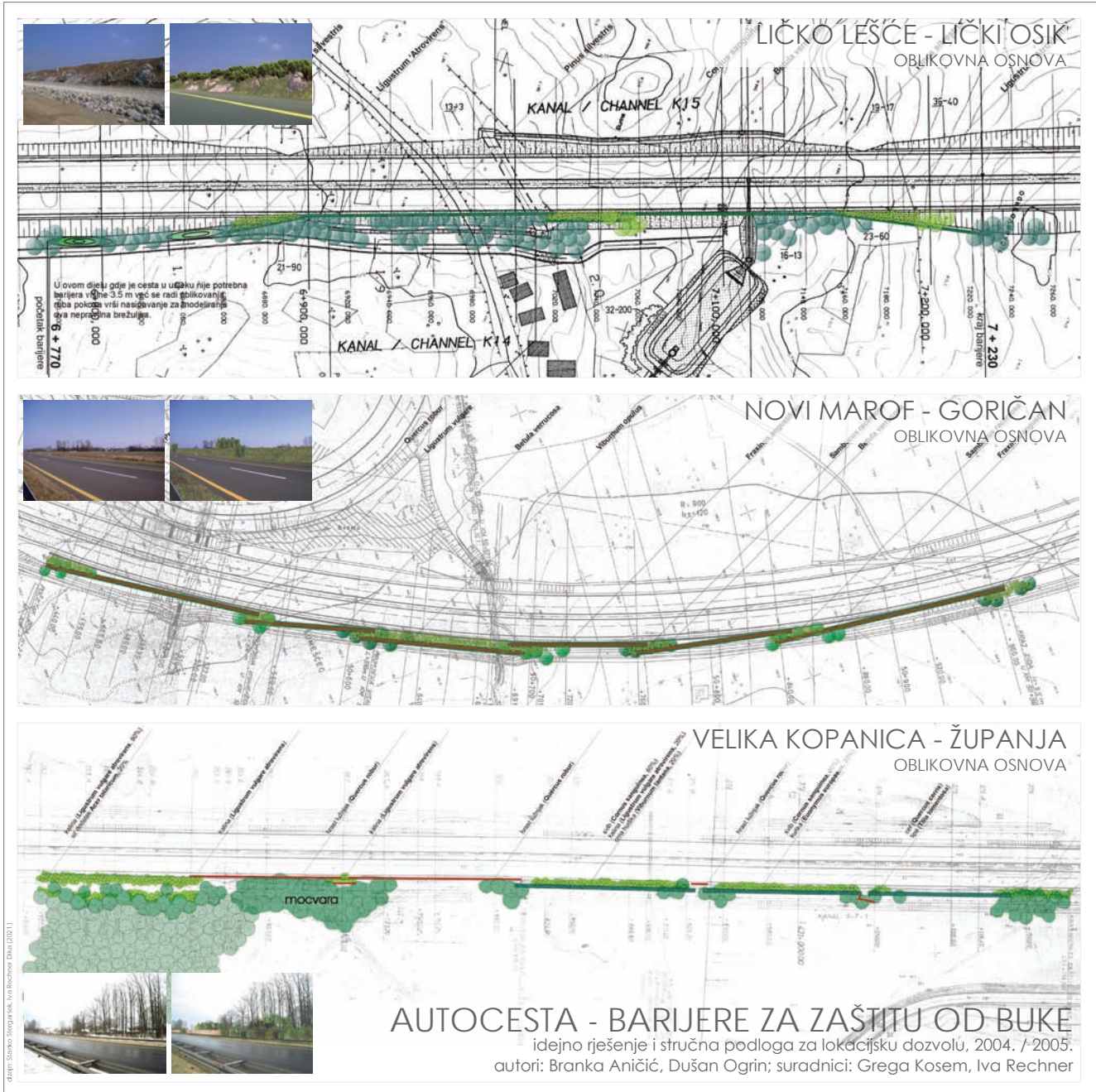
autori: Dušan Ogrin, Branka Aničić; suradnici: Grega Kosem, Petra Pereković (izvedbeni proj.)

KUŠANEC CEMETERY - VELIKA GORICA

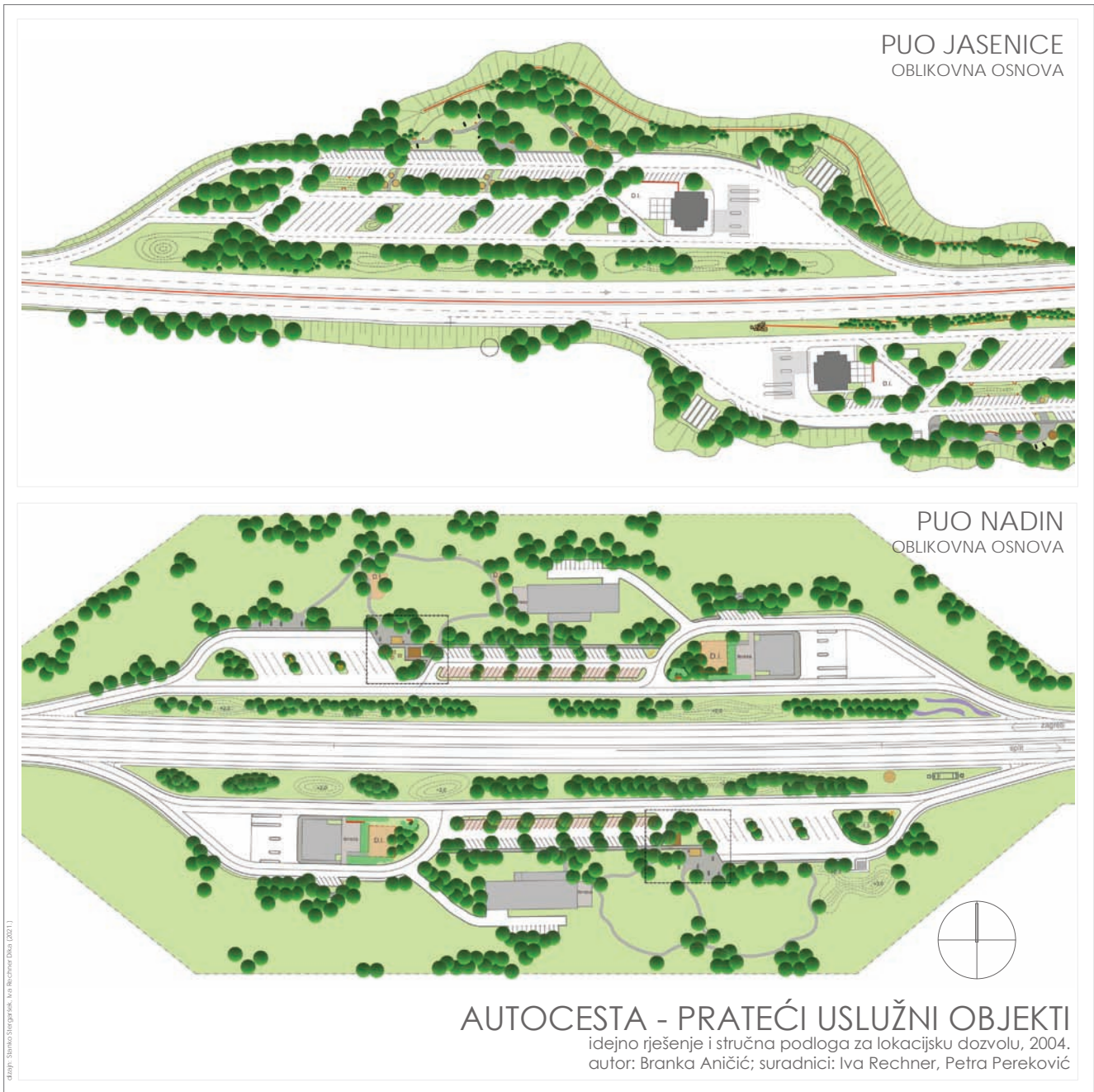
conceptual design, 2004/ construction design, 2008/ partially built

authors: Dušan Ogrin, Branka Aničić; associates: Grega Kosem, Petra Pereković (construction design)

oblik: Studio Štampar, inž. inženjeri d.o.o. (2011)



MOTORWAY – NOISE PROTECTION BARRIERS
conceptual design and expert basis for location permit, 2004 / 2005
authors: Branka Aničić, Dušan Ogrin; associates: Grega Kosem, Iva Rechner



Izdaj: Studio Stjepanek, via Rechner (Društvo, 2001)

HOTEL

KROVNI VRTOVI 1:500
RAZINA -1

UREĐAJNA OSNOVA
PLAN SADNJE



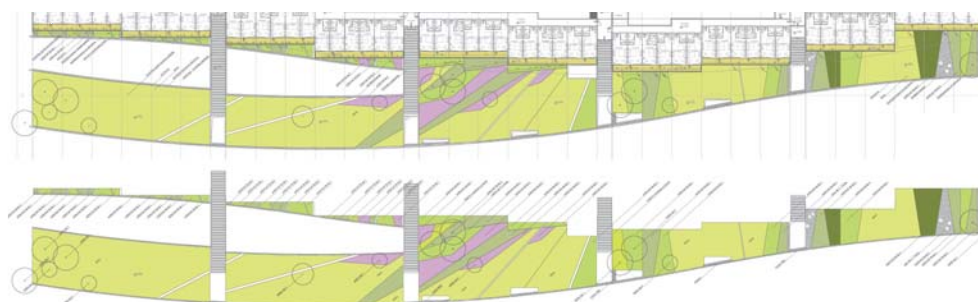
RAZINA -2

UREĐAJNA OSNOVA
PLAN SADNJE



RAZINA -3

UREĐAJNA OSNOVA
PLAN SADNJE



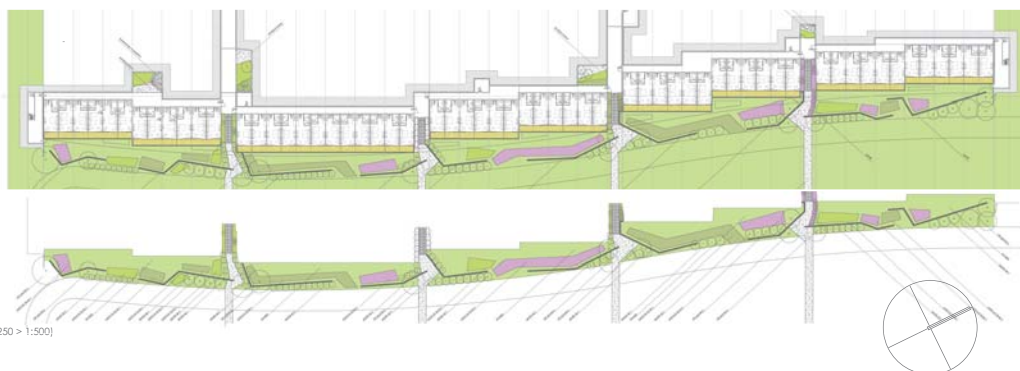
RAZINA -4

UREĐAJNA OSNOVA
PLAN SADNJE



RAZINA -5

UREĐAJNA OSNOVA
PLAN SADNJE



SVI NACRTI UMANJENI ZA POTREBU IZLOŽBE (1:250 > 1:500)

TURISTIČKO NASELJE S HOTELOM POSEBNOG STANDARDA - NIN

glavni projekt, 2011.- 2012.

autori - arhitektura: Ivan Jagić; krajobraz: Branka Aničić, Petra Pereković, Goran Andlar; suradnik: Ranka Perović Bilić

TOURIST RESORT WITH A SPECIAL STANDARD HOTEL - NIN

conceptual design, 2007

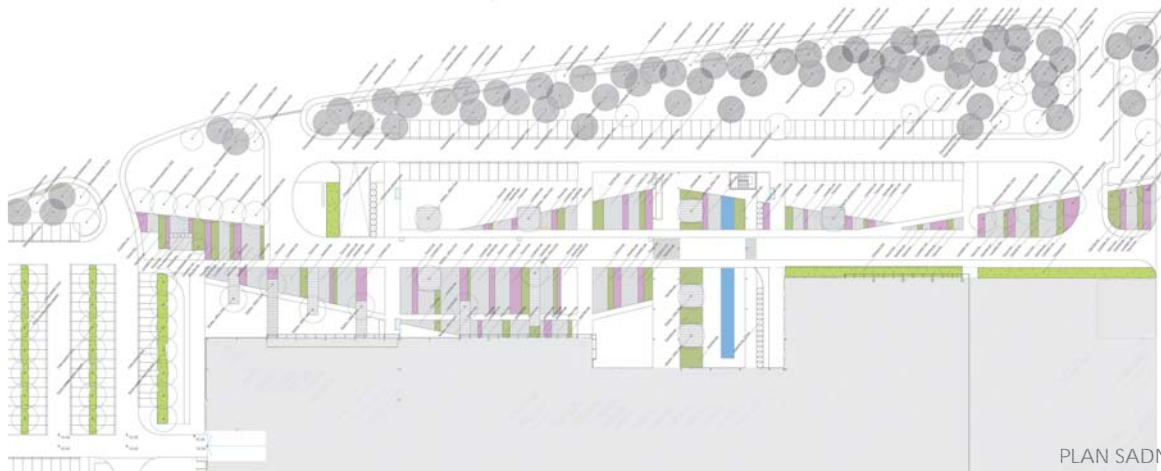
authors - architecture: Ivan Jagić; landscape: Branka Aničić; associates: Iva Rechner, Goran Andlar

HOTEL

ULAZ 1:500



UREĐAJNA OSNOVA



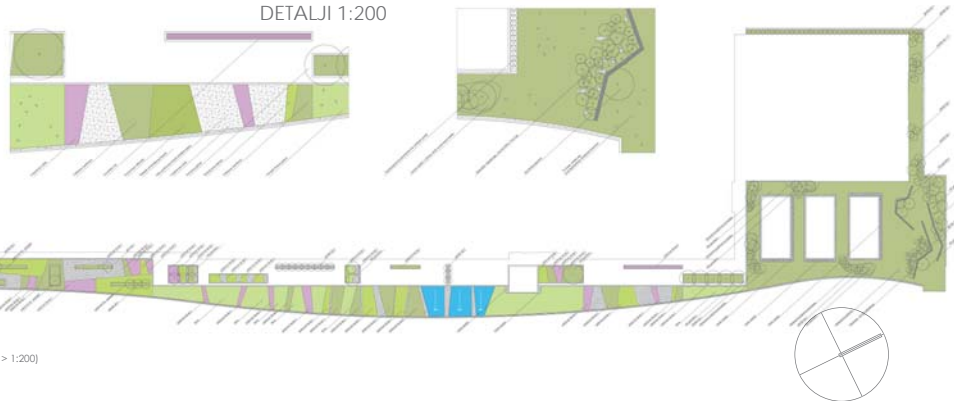
PLAN SADNJE

KROVNI VRTOVI 1:500
RAZINA 0



UREĐAJNA OSNOVA

DETALJI 1:200



PLAN SADNJE

SVI NACRTI UMANJENI ZA POTREBU IZLOŽBE (1:250 > 1:500 / 1:100 > 1:200)

TURISTIČKO NASELJE S HOTELOM POSEBNOG STANDARDA - NIN

glavni projekt, 2011.- 2012.

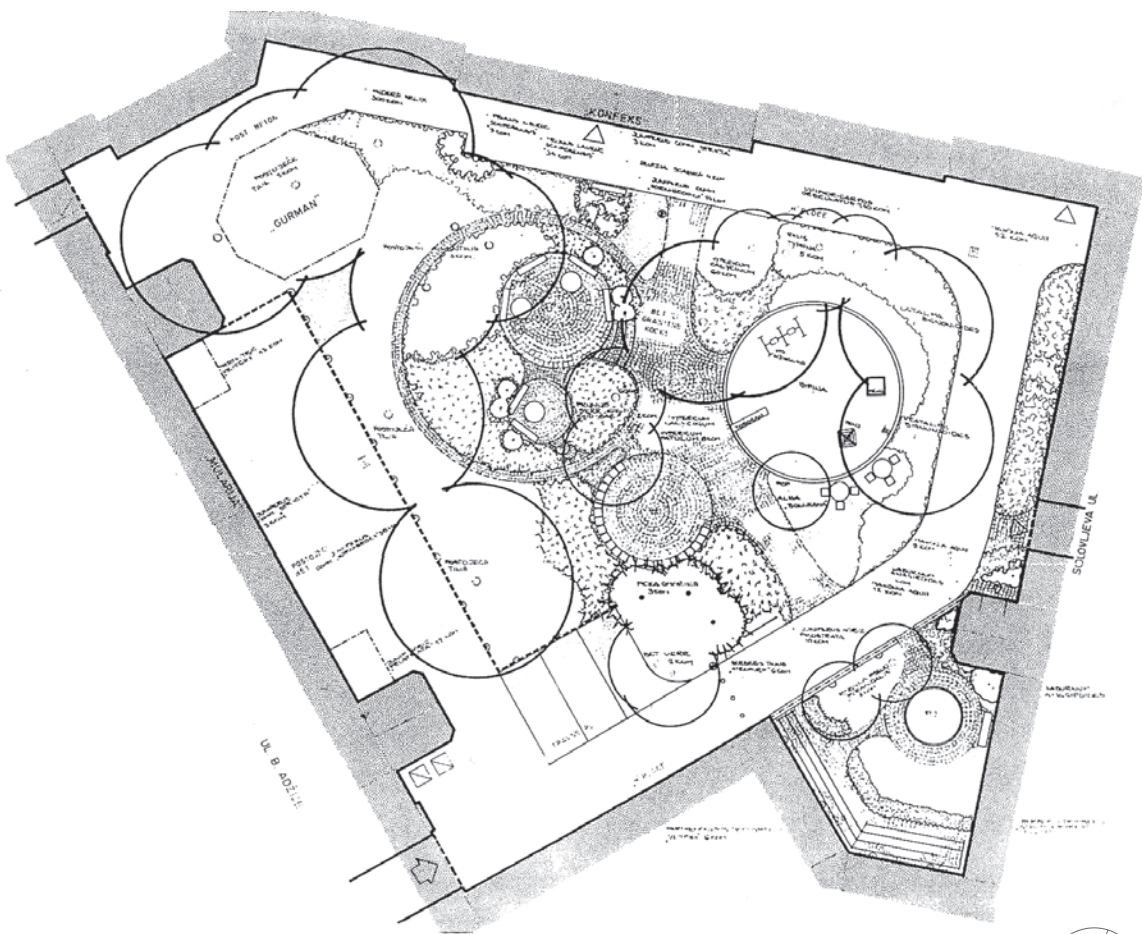
autori - arhitektura: Ivan Jagić; krajobraz: Branka Aničić, Petra Pereković, Goran Andlar; suradnik: Ranka Perović Bilić

TOURIST RESORT WITH A SPECIAL STANDARD HOTEL - NIN

conceptual design, 2007

authors - architecture: Ivan Jagić; landscape: Branka Aničić; associates: Iva Rechner, Goran Andlar

OBLIKOVNA OSNOVA S PLANOM SADNJE 1:100



STAMBENI BLOK KNEZA MISLAVA / SOLOVLJEVA ULICA - ZAGREB

idejni i izvedbeni projekt, 1985.

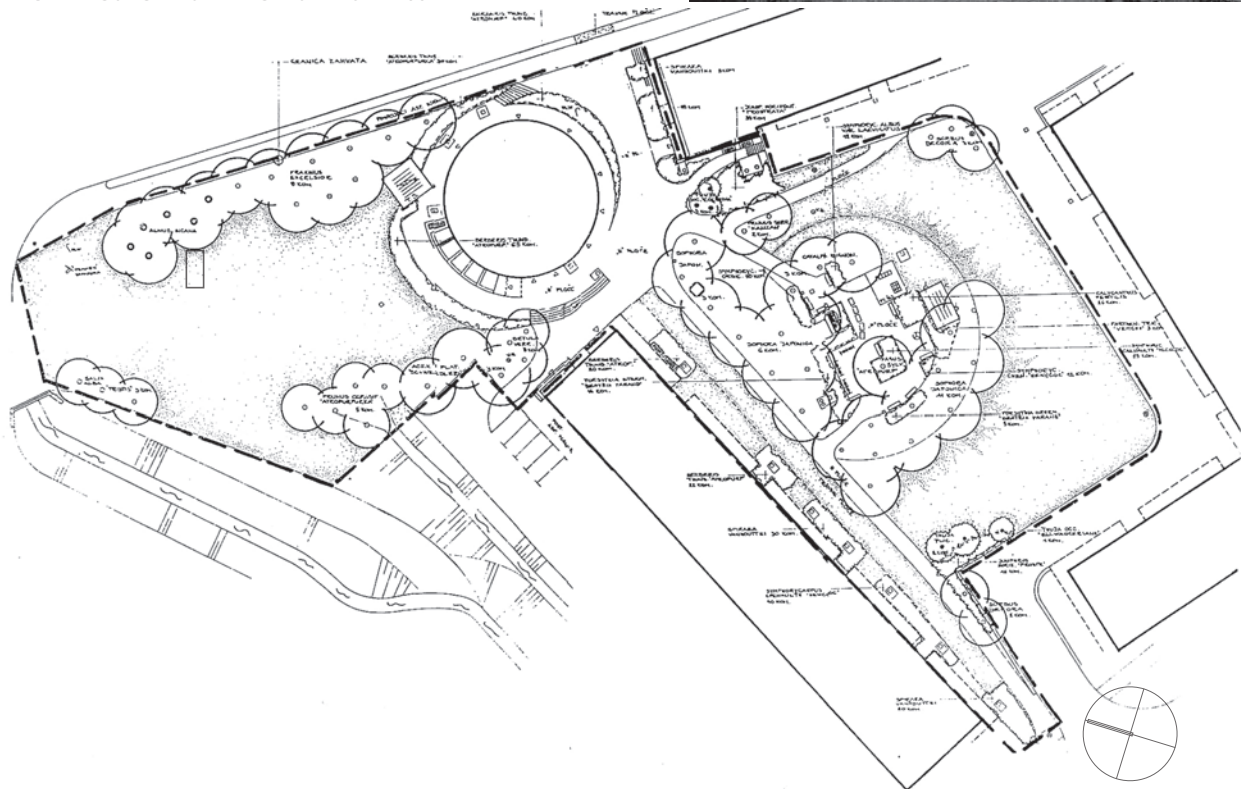
autor: Branka Aničić

RESIDENTIAL BLOCK - DUKE MISLAV / SOLOVLJEVA STREET - ZAGREB

conceptual and construction design, 1985

author: Branka Aničić

OBLIKOVNA OSNOVA S PLANOM SADNJE 1:200



STAMBENI BLOK - NASELJE GREDICE - ZAGREB

idejni i izvedbeni projekt, 1990. / izvedeno 1992.

autor: Branka Aničić; suradnik: Sonja Butula

elazni: Stanko Stjepanović, Iva Rechner, Obitelj (2001), fotografija: Branka Aničić

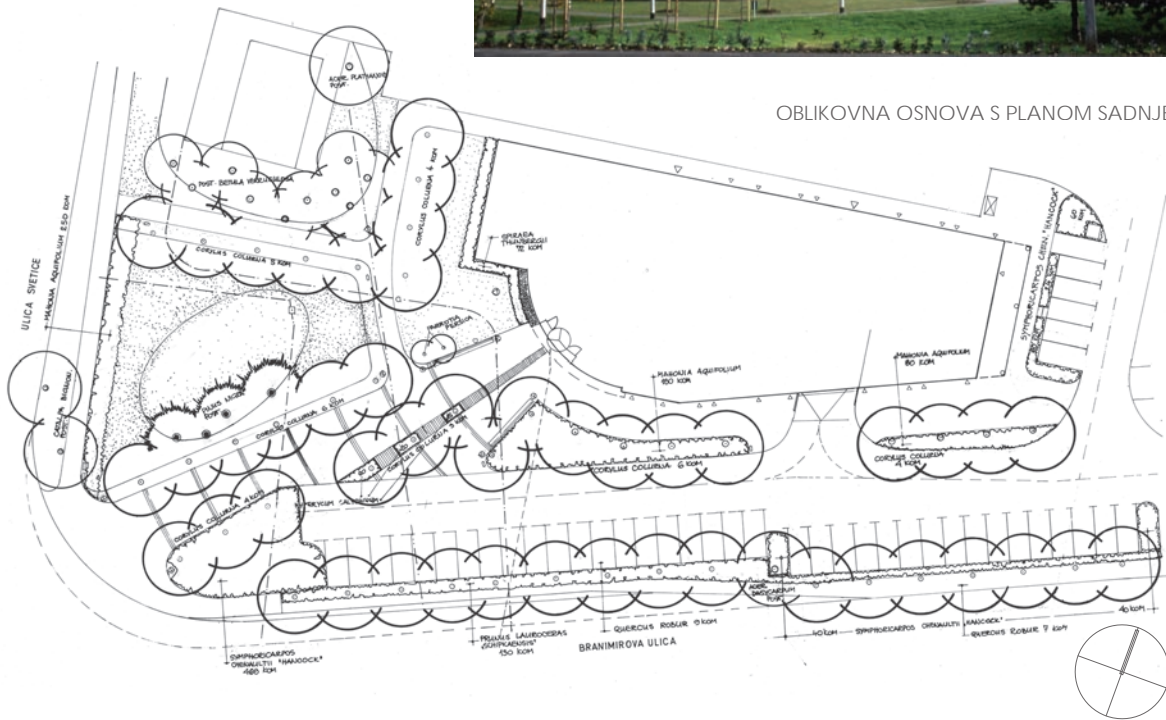
RESIDENTIAL BLOCK – GREDICE SETTLEMENT - ZAGREB

conceptual and construction design, 1990 / built 1992

author: Branka Aničić; associate: Sonja Butula



OBLIKOVNA OSNOVA S PLANOM SADNJE 1:200



GLUMINA BANKA - ZAGREB

idejni i izvedbeni projekt, 1995. / izvedeno 1996.

autori - arhitektura: L. Buljeta; krajobraz: Branka Aničić; suradnik: J. Matej

elazni: Stanko Stjepanović, via Rechner: Obitelj (2021) | fotografija: Branka Aničić

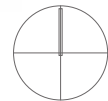
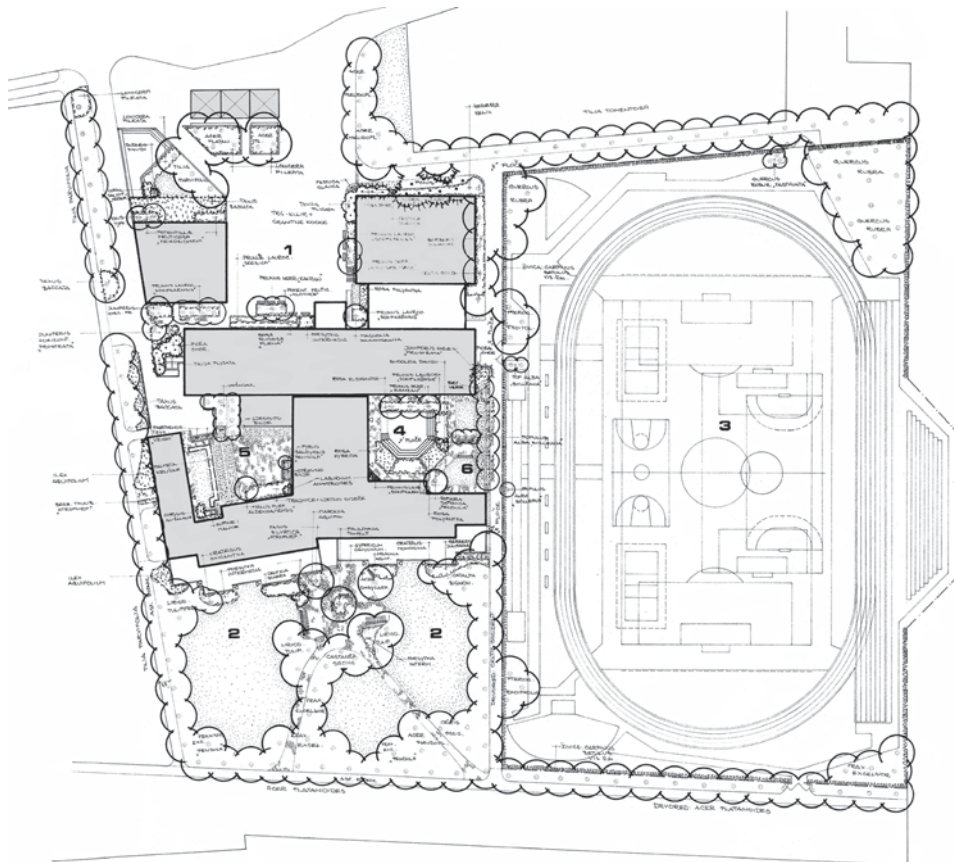
GLUMINA BANK - ZAGREB

conceptual and construction design, 1995 / built 1996

authors - architecture: L. Buljeta; landscape: Branka Aničić; associate: J. Matej

OBLIKOVNA OSNOVA 1:500

- LEGENDA:
1. TRG - GLAVNI ULAZ U SKOLU
 2. TRAVNATO IGRALIŠTE ZA ODMOR
 3. SPORTSKI TERENI
 4. VRTNI TEATAR
 5. SKOLSKI VRT

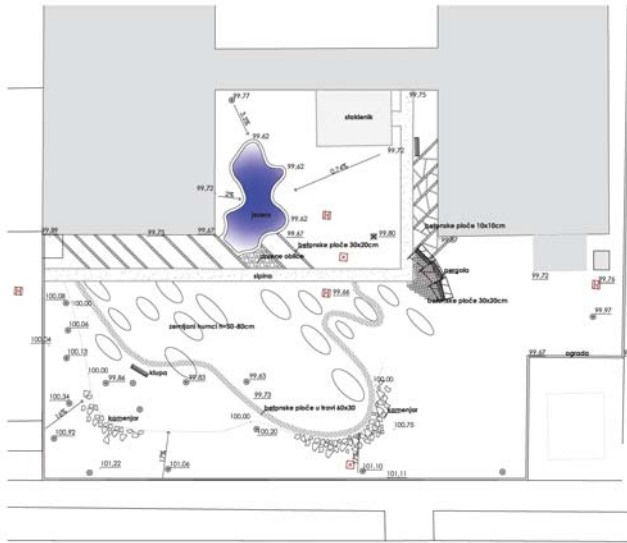


OSNOVNA ŠKOLA "7. STUDENI 1943." - KOPRIVNICA

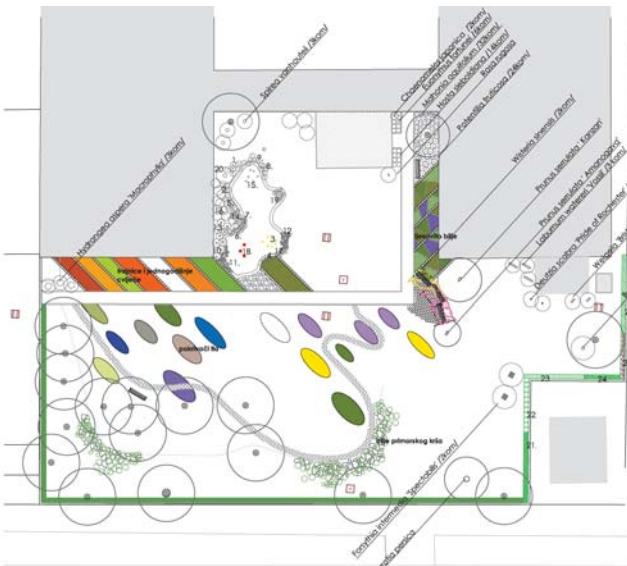
idejni i izvedbeni projekt, 1986.
autori - arhitektura: Branimir Velnić; krajobraz: Branka Aničić

"7th NOVEMBER 1943." ELEMENTARY SCHOOL - KOPRIVNICA

conceptual and construction design, 1986
authors - architecture: Branimir Velnić; landscape: Branka Aničić



ulica grada Vukovara



ulica grada Vukovara

POPSIJIJA - JETRO:

1. Lysichiton americanus
2. Nislo kordana 'Pearl Lake'
3. Nislo kordana
4. Nislo germanico 'Red Orchid'
5. Nislo saskijsko 'Big Dady'
6. Nislo kordana
7. Pionidela lanceolata
8. Anisid daniel
9. Hemerocilla 'Sammy Russell'
10. Equisetum palustre
11. Sagittaria angustifolia
12. Callitriche palustris
13. Carex flacca 'Argentea'
14. Adiantum var.
15. Nislo italica
16. Sparganium angustifolium 'Votivker'
17. Butorius umbellatus
18. Nymphaea var. rassa
19. Typha latifolia
20. Maceya cordata

POPSIJIJA - IJVICA:

21. Ranus bacillata
22. Rhus pilicosa
23. Corallorhiza innata
24. Ligularia vulgaris 'A.Koviers'
25. Verbena thunbergii 'Arapurpur'
26. Pyrocintha 'Red Column'

PLAN SADNJE 1:200

GOOGLE MAPS (2020.)



ŠKOLA "VLADIMIR PRELOG" - EDUKATIVNI VRT - ZAGREB

idejni - izvedbeni projekt, 2009./ izvedeno 2010.
 autor: Branka Aničić; suradnik: Martina Aničić

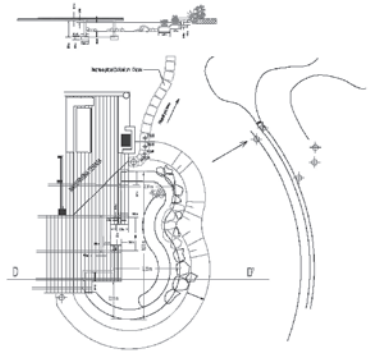
"VLADIMIR PRELOG" SCHOOL - EDUCATIONAL GARDEN - ZAGREB

conceptual - construction design, 2009/ built 2010
 author: Branka Aničić; associate: Martina Aničić

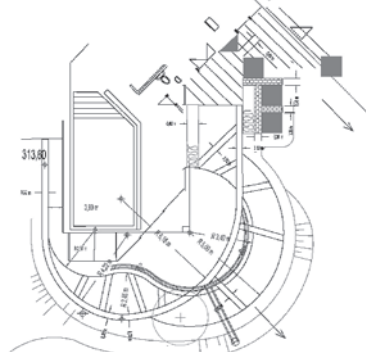


ŠKOLA "VLADIMIR PRELOG" - EDUKATIVNI VRT - ZAGREB
 idejni - izvedbeni projekt, 2009. / Izvedeno 2010.
 autor: Branka Aničić; suradnik: Martina Aničić

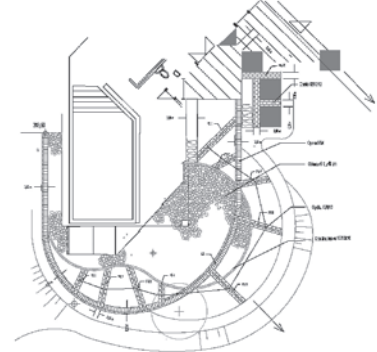
"VLADIMIR PRELOG" SCHOOL - EDUCATIONAL GARDEN - ZAGREB
 conceptual - construction design, 2009/ built 2010
 author: Branka Aničić; associate: Martina Aničić



DETALJ VODENE POVRŠINE 1:100

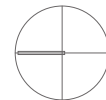
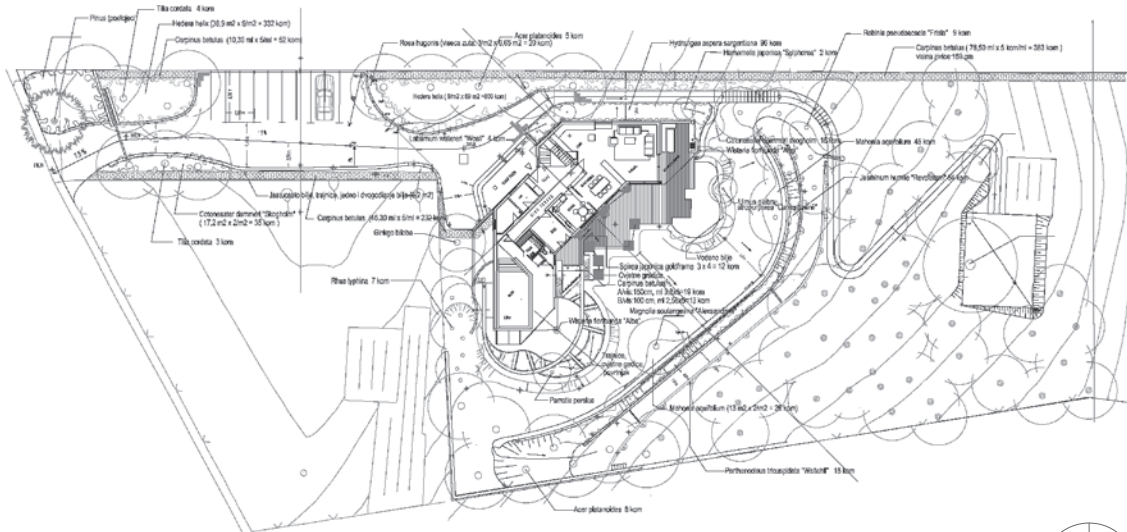


DETALJ TERASE - OSNOVNE MJERE 1:100



DETALJ TERASE - OPLOČENJE 1:100

PLAN SADNJE - TLOCRT 1:200



VRT - OBITELJSKA KUĆA KATAVIĆ - ZAGREB

idejni i izvedbeni projekt, 2001.

autori - arhitektura: Lujo Schwerer; krajobraz: Branka Aničić; suradnik: Miljenko Bokan

Plan: Stanke Stojanović, na Rečević Džur, 2001.

KATAVIĆ FAMILY HOUSE GARDEN - ZAGREB

conceptual and construction design, 2001

authors - architecture: Lujo Schwerer; landscape: Branka Aničić; associate: Miljenko Bokan



OBLIKOVNA OSNOVA 1:1000

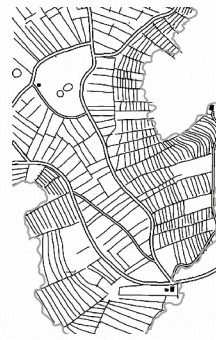
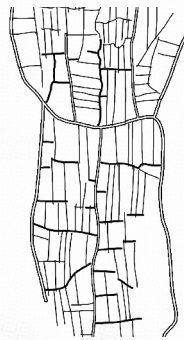


VILA OKRUGLJAK - ZAGREB

elaborat – analiza povijesne geneze, inventarizacija i prijedlog krajobraznog uređenja, 2012.
 autor: Branka Aničić; suradnici: Petra Pereković, Martina Čipčić Bragadin



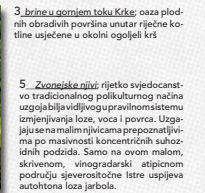
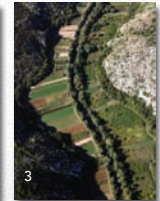
povijest kulturnog krajobraza



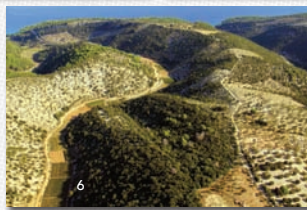
tipovi kulturnog krajobraza

iznimni kulturni krajobrazi

2 baški pašnjaci na otoku Krku: naizgled monotona geomorfološka slika zapravo je kompleksna krška zaravan s brojnim mikrodepresijama. U ovisnosti o tako konfiguriranom terenu i potrebama pregonskog stočarenja evoluirao je pašnjački krajobraz velike strukturne i funkcionalne kompleksnosti vidljive u različitosti suhozidno ograđenih pašnjaka i poljoprivrednih površina (grajal).



4 vinogradi na području Hvarskih Plaža na južnim padinama otoka: rjetke prirodne forme vapnenačkih kolovjajnih zastora velikih nagiba su idealne za uzgoj autohtone loze plavca malog



6 brački dolci: jedinstveni i reprezentativni primjer obradenih vijugavih suhih dolina koje se uzastopno nižu u obalnom potoku sjeveroistočnog dijela Brača od od 10 ak km. Okruženi su velikim površinama suhozidnih zaravala maslinika prepoznatljivih po bunjama i elipsastim gromačama.



7 Limska Draga u Istri: središnjim dijelom istarske zaravn dominira 20-ak km duga vijugava suha dolina. U potpunosti kultivirano drno udolne još uvijek zadržava tradicionalnu strukturu polja. Simbolička snaga ovog prostornog kontrasta se očituje u lokalnim pričama, ali i povijesnoj ulozi u poticanju kulturnih razlika među stanovništvom objiju strana Drage.

8 Kruševci i Dublja na otoku Hvaru: u zaleđu Dola Sv. Ane smješteno je skrivito područje razgranatih kotlina i dolaca terasiranih i kultiviranih uglavnom vinovom lozom. Uz glavnu komunikaciju dolaca građeni su masivni suhozidi koji imaju funkciju odvođenja jakih privremениh tokova vode. Ovdje se također mogu vidjeti i posljednja velika otočka polja lavande.



9 slatina kod Kozariće na otoku Mljetu: po uzoru na jendek u dolini Neretve jedan poljoprivrednik je meliorirao prirodnu slatnu udaljenu svega 50ak m od mora

10 bunari Račica kod Ninskog: u suhim stočarskim krajevima Dalmatinske Zagore rijetki su lokaliteti prirodnih akumulacija vode koje su se uređivale i održavale za potrebe napajanja stoke. U takvoj jednoj prirodnoj depresiji okruženoj pašnjacima izgrađeno je deset suhozidnih bunara u vlasništvu deset obitelji iz obližnjih zaselaka.

11 tipičan zaselak Dalmatinske Zagore u Primorskom dolcu smješten na prijelazu između terasiranih polja krške zavale i pašnjaka u brdovitom zaleđu

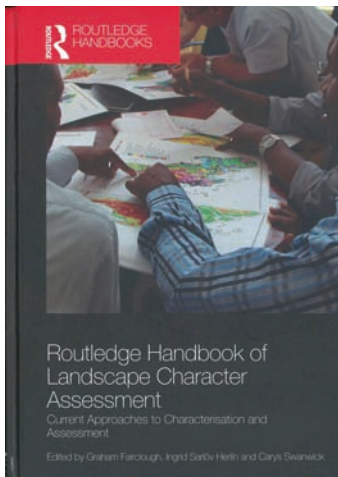


12 pašnike na Kostanjevoj livi: iznimno rijedak način obradivanja tla proizlazi iz karakteristične bogatijeg krša južine. Forme poljoprivrednih parcela su nepravilne, a njihovom površinom dominira veliko bijasto kamenje. U male depresije među kamenjem donosila bi se zemlja kako bi se omogućila sadnja vinove loze, masline, smokve, povrća.

originalni plakat
original poster

KULTURNI KRAJOBRAZI PRIMORSKE HRVATSKE
47. ZAGREBAČKI SALON - arhitektura i urbanizam, 2012. - POSEBNO PRIZNANJE
autori: Goran Anđlar, Branka Aničić

CULTURAL LANDSCAPES OF LITTORAL CROATIA
47th ZAGREB SALON - architecture and urbanism, 2012 - SPECIAL RECOGNITION
authors: Goran Anđlar, Branka Aničić



7
MULTI-METHOD APPROACHES TO CULTURAL LANDSCAPE ASSESSMENT IN CROATIA
Goran Andlar and Branka Aničić

Introduction

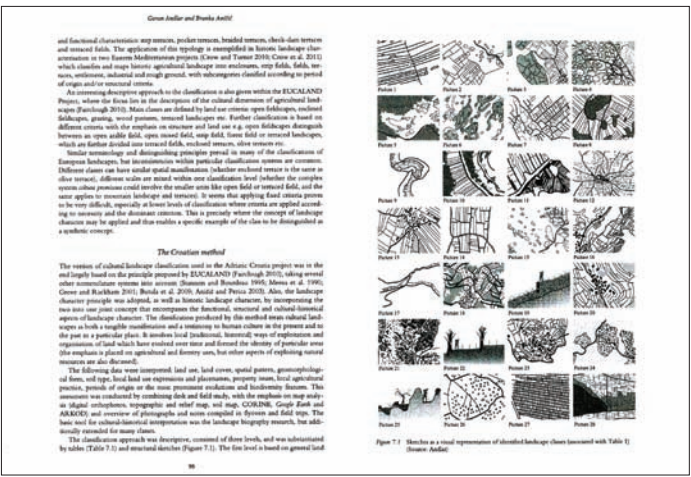
In the 10 years, research has demonstrated the exceptional complexity of Adriatic Croatia's landscape as the result of long lasting human adaptations to natural and socio-economic conditions. Notably it manifested in various land use patterns and dry stone wall construction, complex networks of fields, extensive landscape patterns, managed forests, a variety of traditional industries and its own identity. The variety of Adriatic Croatia is marked with three traditional mountain and urban, and coastal landscape types. Further classification is based on different criteria with the emphasis on structure and land use, e.g. upon landscape character types in open fields, forest, coastal, vine, field, forest field or mixed landscapes, which are further divided into various field, wooded terrain, olive terrain etc.

Similar terminology and designating criteria prevail in many of the classifications of European landscapes, but inconsistencies within particular classification systems are common. Different classes can have similar spatial characteristics (landscapes belong to the same or different types) while the same spatial characteristics can belong to different types. The same applies to mountain landscape and landscape types. It seems that applying the criteria seems to be very difficult, especially at lower levels of classification where criteria are applied according to necessary and clear distinction between types. This is particularly where the concept of landscape character may be applied and this results a specific example of the case to be designated as a specific concept.

The Croatian method

The various cultural landscape classification used in the Adriatic Croatia project was in the end largely based on the previous project for ECUCALAND (Faračić 2010), which aimed other cultural landscape types in Croatia (Šušteršič and Boudier 1990; Mees et al. 1996; Čović and Boudier 2011; Boudier et al. 2010; Aničić and Pavač 2010). Also, the landscape character concept was adopted, as well as historic landscape character, by incorporating the new site use concept that encompasses the functional, structural and cultural landscape aspects of landscape character. The classification produced by the method using reduced landscape types is highly qualitative and is sensitive to human culture in the present and in the past in a particular place. It involves local (historical, historical) ways of engineering and landscape character. The classification is based on the landscape character, but the emphasis is placed on agricultural and forestry use, but other aspects of explaining natural resources are also discussed.

The following table was composed: land use, land cover, spatial pattern, geomorphological form, soil type, local land use, vegetation and phytosociology, property status, local agricultural practices, periods of usage and the nature preservation and landscape character. This assessment was conducted by combining field and field study, with the emphasis on map analysis. Major attributes, topographic and relief maps, as well as CORINE, Copernicus and AKKOS and overview of photographs and notes compiled in system and field study. The final list of cultural landscape types was composed of 10 types, which are listed in the table below (Table 7.1) and presented in the text of the book, and are classified by table (Table 7.1) and presented in the text of the book, and are classified by table (Table 7.1) and presented in the text of the book.



Andlar, G., Aničić, B. (2018.): Routledge Handbook of Landscape Assessment, Current Approaches to Characterisation and Assessment; Poglavlje / Chapter MULTI-METHOD APPROACHES TO CULTURAL LANDSCAPE ASSESSMENT IN CROATIA, pp.90; Routledge, London, 2018



VR
U INDIVIDUALNOJ REZIDENCIALNOJ ARHITEKTURI

SK. školska knjiga

SADRŽAJ

PREDGOVOR 8

1. KULA I VRTI RAO IZDARSKIM OBLIN STANOVANJA 8

1.1. Vrti u izdarskim prostorima 8

1.2. Vrtovi u izdarskim prostorima 10

1.3. Vrtovi u izdarskim prostorima 10

1.4. Vrtovi u izdarskim prostorima 10

1.5. Vrtovi u izdarskim prostorima 10

2. OBLJEŠTA INDIVIDUALNOG STANOVANJA I RIZIDENCIALNOG PROSTORA 21

2.1. Oblasna kula u okviru 2000 gr. Arhiva 21

2.2. Oblasna kula u okviru 2000 gr. Arhiva 21

2.3. Oblasna kula u okviru 2000 gr. Arhiva 21

2.4. Oblasna kula u okviru 2000 gr. Arhiva 21

2.5. Oblasna kula u okviru 2000 gr. Arhiva 21

2.6. Oblasna kula u okviru 2000 gr. Arhiva 21

2.7. Oblasna kula u okviru 2000 gr. Arhiva 21

2.8. Oblasna kula u okviru 2000 gr. Arhiva 21

2.9. Oblasna kula u okviru 2000 gr. Arhiva 21

2.10. Oblasna kula u okviru 2000 gr. Arhiva 21

3. UKLONJENI PROJEKTI OBLJEŠTA INDIVIDUALNOG STANOVANJA I RIZIDENCIALNOG PROSTORA I RAZLIČITIH CIVILIZACIJSKIH VRTOVA I BAZENA 127

4. IDEALNI MODEL VEŠTAČENSKOG IZJEVA U OBLASTI PRENOSI BODAVIŠTA IZ OBLASTI VEŠTAČENSKOG IZJEVA 133

LITERATURA 136

REZIME IZ OBLASTI VEŠTAČENSKOG IZJEVA 139

REZIME IZ OBLASTI VEŠTAČENSKOG IZJEVA 140

REZIME IZ OBLASTI VEŠTAČENSKOG IZJEVA 141

REZIME IZ OBLASTI VEŠTAČENSKOG IZJEVA 142

REZIME IZ OBLASTI VEŠTAČENSKOG IZJEVA 143

REZIME IZ OBLASTI VEŠTAČENSKOG IZJEVA 144

REZIME IZ OBLASTI VEŠTAČENSKOG IZJEVA 145

REZIME IZ OBLASTI VEŠTAČENSKOG IZJEVA 146

REZIME IZ OBLASTI VEŠTAČENSKOG IZJEVA 147

REZIME IZ OBLASTI VEŠTAČENSKOG IZJEVA 148

REZIME IZ OBLASTI VEŠTAČENSKOG IZJEVA 149

REZIME IZ OBLASTI VEŠTAČENSKOG IZJEVA 150

1.2. VEŠTAČENSKO IZJEVA

1.2.1. VEŠTAČENSKO IZJEVA

1.2.2. VEŠTAČENSKO IZJEVA

1.2.3. VEŠTAČENSKO IZJEVA

1.2.4. VEŠTAČENSKO IZJEVA

1.2.5. VEŠTAČENSKO IZJEVA

1.2.6. VEŠTAČENSKO IZJEVA

1.2.7. VEŠTAČENSKO IZJEVA

1.2.8. VEŠTAČENSKO IZJEVA

1.2.9. VEŠTAČENSKO IZJEVA

1.2.10. VEŠTAČENSKO IZJEVA

1.2.11. VEŠTAČENSKO IZJEVA

1.2.12. VEŠTAČENSKO IZJEVA

1.2.13. VEŠTAČENSKO IZJEVA

1.2.14. VEŠTAČENSKO IZJEVA

1.2.15. VEŠTAČENSKO IZJEVA

1.2.16. VEŠTAČENSKO IZJEVA

1.2.17. VEŠTAČENSKO IZJEVA

1.2.18. VEŠTAČENSKO IZJEVA

1.2.19. VEŠTAČENSKO IZJEVA

1.2.20. VEŠTAČENSKO IZJEVA

1.2.21. VEŠTAČENSKO IZJEVA

1.2.22. VEŠTAČENSKO IZJEVA

1.2.23. VEŠTAČENSKO IZJEVA

1.2.24. VEŠTAČENSKO IZJEVA

1.2.25. VEŠTAČENSKO IZJEVA

1.2.26. VEŠTAČENSKO IZJEVA

1.2.27. VEŠTAČENSKO IZJEVA

1.2.28. VEŠTAČENSKO IZJEVA

1.2.29. VEŠTAČENSKO IZJEVA

1.2.30. VEŠTAČENSKO IZJEVA

1.2.31. VEŠTAČENSKO IZJEVA

1.2.32. VEŠTAČENSKO IZJEVA

1.2.33. VEŠTAČENSKO IZJEVA

1.2.34. VEŠTAČENSKO IZJEVA

1.2.35. VEŠTAČENSKO IZJEVA

1.2.36. VEŠTAČENSKO IZJEVA

1.2.37. VEŠTAČENSKO IZJEVA

1.2.38. VEŠTAČENSKO IZJEVA

1.2.39. VEŠTAČENSKO IZJEVA

1.2.40. VEŠTAČENSKO IZJEVA

1.2.41. VEŠTAČENSKO IZJEVA

1.2.42. VEŠTAČENSKO IZJEVA

1.2.43. VEŠTAČENSKO IZJEVA

1.2.44. VEŠTAČENSKO IZJEVA

1.2.45. VEŠTAČENSKO IZJEVA

1.2.46. VEŠTAČENSKO IZJEVA

1.2.47. VEŠTAČENSKO IZJEVA

1.2.48. VEŠTAČENSKO IZJEVA

1.2.49. VEŠTAČENSKO IZJEVA

1.2.50. VEŠTAČENSKO IZJEVA

1.2.51. VEŠTAČENSKO IZJEVA

1.2.52. VEŠTAČENSKO IZJEVA

1.2.53. VEŠTAČENSKO IZJEVA

1.2.54. VEŠTAČENSKO IZJEVA

1.2.55. VEŠTAČENSKO IZJEVA

1.2.56. VEŠTAČENSKO IZJEVA

1.2.57. VEŠTAČENSKO IZJEVA

1.2.58. VEŠTAČENSKO IZJEVA

1.2.59. VEŠTAČENSKO IZJEVA

1.2.60. VEŠTAČENSKO IZJEVA

1.2.61. VEŠTAČENSKO IZJEVA

1.2.62. VEŠTAČENSKO IZJEVA

1.2.63. VEŠTAČENSKO IZJEVA

1.2.64. VEŠTAČENSKO IZJEVA

1.2.65. VEŠTAČENSKO IZJEVA

1.2.66. VEŠTAČENSKO IZJEVA

1.2.67. VEŠTAČENSKO IZJEVA

1.2.68. VEŠTAČENSKO IZJEVA

1.2.69. VEŠTAČENSKO IZJEVA

1.2.70. VEŠTAČENSKO IZJEVA

1.2.71. VEŠTAČENSKO IZJEVA

1.2.72. VEŠTAČENSKO IZJEVA

1.2.73. VEŠTAČENSKO IZJEVA

1.2.74. VEŠTAČENSKO IZJEVA

1.2.75. VEŠTAČENSKO IZJEVA

1.2.76. VEŠTAČENSKO IZJEVA

1.2.77. VEŠTAČENSKO IZJEVA

1.2.78. VEŠTAČENSKO IZJEVA

1.2.79. VEŠTAČENSKO IZJEVA

1.2.80. VEŠTAČENSKO IZJEVA

1.2.81. VEŠTAČENSKO IZJEVA

1.2.82. VEŠTAČENSKO IZJEVA

1.2.83. VEŠTAČENSKO IZJEVA

1.2.84. VEŠTAČENSKO IZJEVA

1.2.85. VEŠTAČENSKO IZJEVA

1.2.86. VEŠTAČENSKO IZJEVA

1.2.87. VEŠTAČENSKO IZJEVA

1.2.88. VEŠTAČENSKO IZJEVA

1.2.89. VEŠTAČENSKO IZJEVA

1.2.90. VEŠTAČENSKO IZJEVA

1.2.91. VEŠTAČENSKO IZJEVA

1.2.92. VEŠTAČENSKO IZJEVA

1.2.93. VEŠTAČENSKO IZJEVA

1.2.94. VEŠTAČENSKO IZJEVA

1.2.95. VEŠTAČENSKO IZJEVA

1.2.96. VEŠTAČENSKO IZJEVA

1.2.97. VEŠTAČENSKO IZJEVA

1.2.98. VEŠTAČENSKO IZJEVA

1.2.99. VEŠTAČENSKO IZJEVA

1.2.100. VEŠTAČENSKO IZJEVA

Branka Aničić: VRT U INDIVIDUALNOJ REZIDENCIALNOJ ARHITEKTURI GARDEN IN INDIVIDUAL RESIDENTIAL ARCHITECTURE Školska knjiga, 150 pp, Zagreb, 2017



Zagrebački parkovi

Branka Aničić
Nikola Samardžija

SADRŽAJ

1. Uvod 8

2. Parkovi u Zagrebu 10

3. Parkovi u Zagrebu 10

4. Parkovi u Zagrebu 10

5. Parkovi u Zagrebu 10

6. Parkovi u Zagrebu 10

7. Parkovi u Zagrebu 10

8. Parkovi u Zagrebu 10

9. Parkovi u Zagrebu 10

10. Parkovi u Zagrebu 10

11. Parkovi u Zagrebu 10

12. Parkovi u Zagrebu 10

13. Parkovi u Zagrebu 10

14. Parkovi u Zagrebu 10

15. Parkovi u Zagrebu 10

16. Parkovi u Zagrebu 10

17. Parkovi u Zagrebu 10

18. Parkovi u Zagrebu 10

19. Parkovi u Zagrebu 10

20. Parkovi u Zagrebu 10

21. Parkovi u Zagrebu 10

22. Parkovi u Zagrebu 10

23. Parkovi u Zagrebu 10

24. Parkovi u Zagrebu 10

25. Parkovi u Zagrebu 10

26. Parkovi u Zagrebu 10

27. Parkovi u Zagrebu 10

28. Parkovi u Zagrebu 10

29. Parkovi u Zagrebu 10

30. Parkovi u Zagrebu 10

31. Parkovi u Zagrebu 10

32. Parkovi u Zagrebu 10

33. Parkovi u Zagrebu 10

34. Parkovi u Zagrebu 10

35. Parkovi u Zagrebu 10

36. Parkovi u Zagrebu 10

37. Parkovi u Zagrebu 10

38. Parkovi u Zagrebu 10

39. Parkovi u Zagrebu 10

40. Parkovi u Zagrebu 10

41. Parkovi u Zagrebu 10

42. Parkovi u Zagrebu 10

43. Parkovi u Zagrebu 10

44. Parkovi u Zagrebu 10

45. Parkovi u Zagrebu 10

46. Parkovi u Zagrebu 10

47. Parkovi u Zagrebu 10

48. Parkovi u Zagrebu 10

49. Parkovi u Zagrebu 10

50. Parkovi u Zagrebu 10

51. Parkovi u Zagrebu 10

52. Parkovi u Zagrebu 10

53. Parkovi u Zagrebu 10

54. Parkovi u Zagrebu 10

55. Parkovi u Zagrebu 10

56. Parkovi u Zagrebu 10

57. Parkovi u Zagrebu 10

58. Parkovi u Zagrebu 10

59. Parkovi u Zagrebu 10

60. Parkovi u Zagrebu 10

61. Parkovi u Zagrebu 10

62. Parkovi u Zagrebu 10

63. Parkovi u Zagrebu 10

64. Parkovi u Zagrebu 10

65. Parkovi u Zagrebu 10

66. Parkovi u Zagrebu 10

67. Parkovi u Zagrebu 10

68. Parkovi u Zagrebu 10

69. Parkovi u Zagrebu 10

70. Parkovi u Zagrebu 10

71. Parkovi u Zagrebu 10

72. Parkovi u Zagrebu 10

73. Parkovi u Zagrebu 10

74. Parkovi u Zagrebu 10

75. Parkovi u Zagrebu 10

76. Parkovi u Zagrebu 10

77. Parkovi u Zagrebu 10

78. Parkovi u Zagrebu 10

79. Parkovi u Zagrebu 10

80. Parkovi u Zagrebu 10

81. Parkovi u Zagrebu 10

82. Parkovi u Zagrebu 10

83. Parkovi u Zagrebu 10

84. Parkovi u Zagrebu 10

85. Parkovi u Zagrebu 10

86. Parkovi u Zagrebu 10

87. Parkovi u Zagrebu 10

88. Parkovi u Zagrebu 10

89. Parkovi u Zagrebu 10

90. Parkovi u Zagrebu 10

91. Parkovi u Zagrebu 10

92. Parkovi u Zagrebu 10

93. Parkovi u Zagrebu 10

94. Parkovi u Zagrebu 10

95. Parkovi u Zagrebu 10

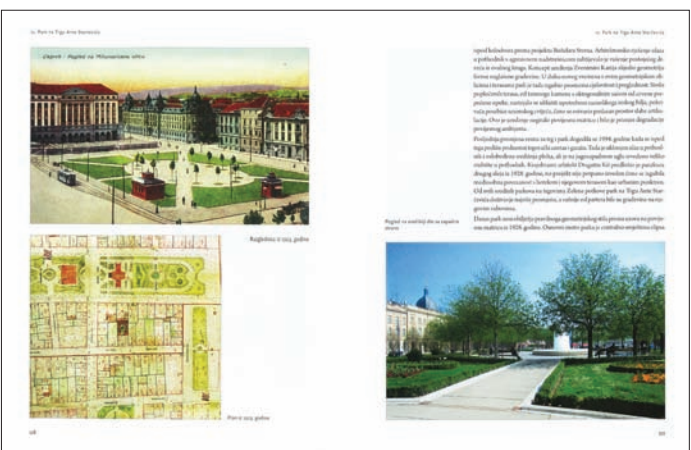
96. Parkovi u Zagrebu 10

97. Parkovi u Zagrebu 10

98. Parkovi u Zagrebu 10

99. Parkovi u Zagrebu 10

100. Parkovi u Zagrebu 10

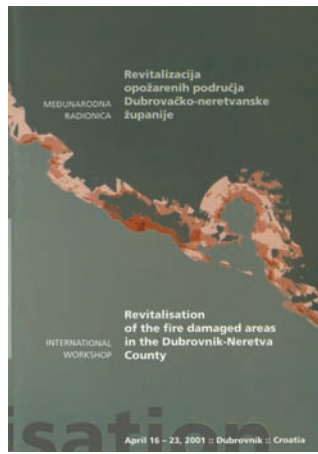


Aničić, B., Samardžija, N.: ZAGREBAČKI PARKOVI - MONOGRAFIJA / ZAGREB PARKS - MONOGRAPH Zagrebački holding d.o.o. podružnica Zrinjevac, AGM; 300 pp; Zagreb, 2015



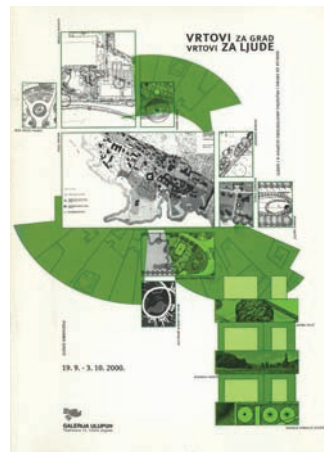
ROVINJ

International student workshop for landscape planning, Rovinj, 1999
 Department of Landscape Architecture, Faculty of Agriculture, University of Zagreb, Croatia
 Department of Landscape Architecture, Biotechnical Faculty, University of Ljubljana, Slovenia
 Department of Landscape Architecture, Harriet-Watt University, Edinburgh, Scotland
 Department of Landscape Architecture, Swedish Agricultural University Alnarp, Sweden
 Department of Landscape Architecture, Technical University Berlin, Germany



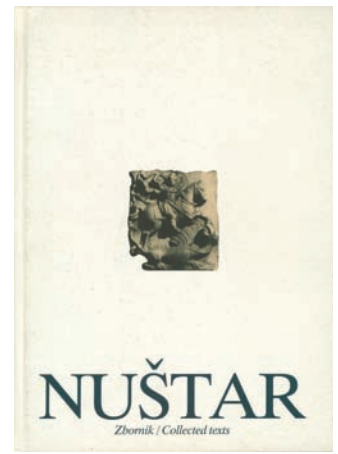
REVITALIZACIJA OPOŽARENIH PODRUČJA DUBROVAČKO-NERETVANSKE ŽUPANIJE

Revitalisation of the fire damaged areas in the Dubrovnik-Neretva County
 INTERNATIONAL WORKSHOP
 April 16 - 23, 2001 - Dubrovnik - Croatia



IZLOŽBA / EXHIBITION

VRTOVI ZA GRAD, VRTOVI ZA LJUDE
GARDENS FOR THE CITY, GARDENS FOR PEOPLE
 Sekcija za vrtnu i pejzažnu arhitekturu ULUPUH-a i gosti
 Galerija ULUPUH, Zagreb, 2000
 Branka Aničić
 Prijedlog obnove Starčevićevog trga
 Proposal for the renovation of Starčević Square



NUŠTAR

Zbornik / Collected texts
 Vesna Koščak, Branka Aničić
 PRILOG ISTRAŽIVANJU PERIVOJA UZ NUŠTARSKI DVORAC
 CONTRIBUTION TO THE RESEARCH OF THE PARK NEAR NUŠTAR CASTLE
 Zagreb, 1996

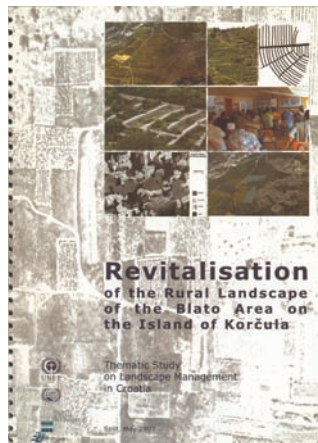
DUBROVAČKO-NERETVANSKA ŽUPANIJA / DUBROVNIK-NERETVA COUNTY
REVITALIZACIJA OPOŽARENIH PODRUČJA
REVITALISATION OF THE FIRE DAMAGED AREAS
 Međunarodna radionica / International workshop, Dubrovnik, 2001
 Sveučilište u Zagrebu Agronomski fakultet, Zavod za ukrasno bilje i krajobraznu arhitekturu
 University of Ljubljana, Department of Landscape architecture
 Harriet-Watt University, Edinburgh, Department of Landscape architecture UK
 Agricultural University Alnarp Sweden, Department of Landscape architecture
 Technische Universität Hannover, Deutschland

NUŠTAR - Zbornik / Collected Texts
 Vesna Koščak, Branka Aničić
PRILOG ISTRAŽIVANJU PERIVOJA UZ NUŠTARSKI DVORAC
CONTRIBUTION TO THE RESEARCH OF THE PARK NEAR NUŠTAR CASTLE
 Zagreb, 1996



KRAŠIĆ

VREDNOVANJE I RAZVOJNE MOGUĆNOSTI AGRARNOG KRAJOBRAZA
EVALUATION AND DEVELOPMENT OPPORTUNITIES OF AGRICULTURAL LANDSCAPE
 Priručnik za savjetnike, Radionica / Handbook for Counselors, Workshop, Krašić, 2003
 Sveučilište u Zagrebu Agronomski fakultet, Zavod za ukrasno bilje i krajobraznu arhitekturu
 Hrvatski zavod za poljoprivrednu savjetodavnu službu



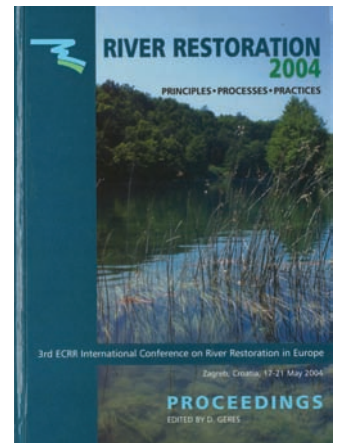
BLATO AREA ON THE ISLAND OF KORČULA

REVITALISATION OF THE RURAL LANDSCAPE
 Thematic Study on Landscape Management in Croatia, Split, 2007
 Sveučilište u Zagrebu Agronomski fakultet, Zavod za ukrasno bilje i krajobraznu arhitekturu
 United Nations Environment Programme
 Mediterranean Action Plan



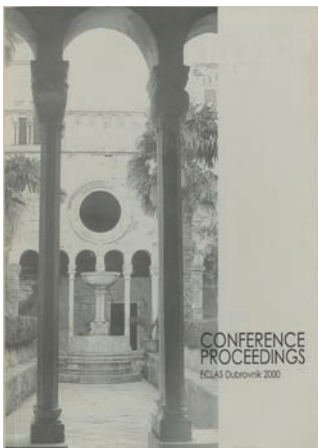
KRAJOBRAZNA OSNOVE HRVATSKE

SADRŽAJNA I METODSKA PODLOGA KRAJOBRAZNE OSNOVE HRVATSKE
CONTENT AND METHODOLOGICAL BASIS OF THE LANDSCAPE BASIS OF CROATIA
 Ministarstvo prostornog uređenja, graditeljstva i stanovanja, Zavod za prostorno planiranje
 Sveučilište u Zagrebu Agronomski fakultet, Zavod za ukrasno bilje i krajobraznu arhitekturu
 Zagreb, 1999

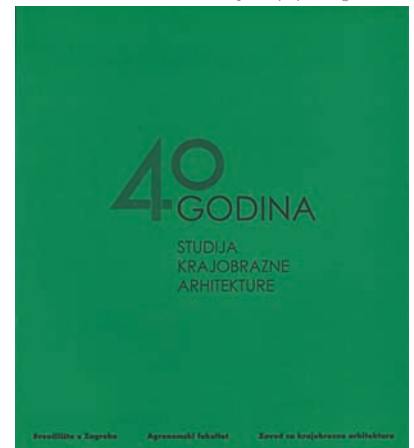


RIVER RESTORATION / PRINCIPLES, PRECESSES, PARTICES

3rd ECCR International Conference on River Restoration in Europe, Proceedings
 Branka Aničić, Sonja Butula, Dušan Ogrin
ARE CONSERVATION AND RESTORATION OF RIVERS REAL DILEMMAS
THE CONTEMPORARY WORLD
 Keynote paper, Zagreb, 2004



CONFERENCE PROCEEDINGS
 ECLAS Dubrovnik 2000
 Conference Proceedings; Urednik / Editor: Branka Aničić
 Department of Landscape Architecture, Faculty of Agriculture, University of Zagreb, 2000



40 GODINA
STUDIJA KRAJOBRAZNE ARHITEKTURE
 Jubilarni zbornik / Jubilee anthology; Urednik / Editor: Branka Aničić
 Sveučilište u Zagrebu Agronomski fakultet, Zavod za krajobraznu arhitekturu, Zagreb, 2008



POGOVOR

prof. Martin van den Toorn

Profesoricu Aničić sam upoznao 2016. godine, kad sam prvi put održao predavanje kao gostujući profesor na studiju Krajobrazna arhitektura kao predstojnicu Zavoda.

Njezina akademska aktivnost već je međunarodno prepoznata i okrunjena od ECLAS-a, Europskog vijeća studija krajobrazne arhitekture, dodjelom Nagrade za životno postignuće.

Očaran sam što vidim da je upravo sada, po prvi puta, organizirana izložba njezinih radova koji je predstavljaju kao projektanticu krajobrazne arhitekture i to od strane studija Krajobrazna arhitektura i Hrvatskog muzeja arhitekture Hrvatske akademije znanosti i umjetnosti.

Njezin rad pokazuje pridavanje osobite pozornosti izboru lokacije za pojedinu namjenu, uravnoteženu organizaciju korištenja prostora i bogatstvo raznolike primjene materijala u oblikovanju.

Čestitam studiju Krajobrazna arhitektura i Hrvatskom muzeju arhitekture na ovoj krasnoj izložbi.

Izložba nije samo osvrt unatrag na ono što je napravljeno i iz čega se može učiti, već može poslužiti i kao izvor inspiracije za mlađe generacije u suočavanju s izazovima krajobrazne arhitekture u 21. stoljeću povezanim s klimatskim promjenama, promjenama u korištenju energije i stvaranjem zdravijeg okoliša za ljude. Hvala!

EPILOGUE

prof. Martin van den Toorn

I got to know professor Aničić for the first time when I gave a guest lecture at the Department of Landscape Architecture in Zagreb (2016) when she was Chairman of the Department.

Internationally her academic work has already been acknowledged by ECLAS, the European Council of Landscape Architecture Schools, with a Lifetime Achievement Award.

I am delighted to see now, that for the first time an exhibition of her work as practicing landscape architect has been organized by the Department of Landscape Architecture and the Croatian Museum of Architecture of the Croatian Academy of Sciences and Arts.

Her work shows a careful attention for the choice of location and making use of the site, a balanced organization of space for use and uses and a rich diversity of use of design materials.

I congratulate the Department of Landscape Architecture and the Croatian Museum of Architecture with this beautiful exposition.

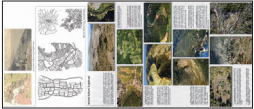
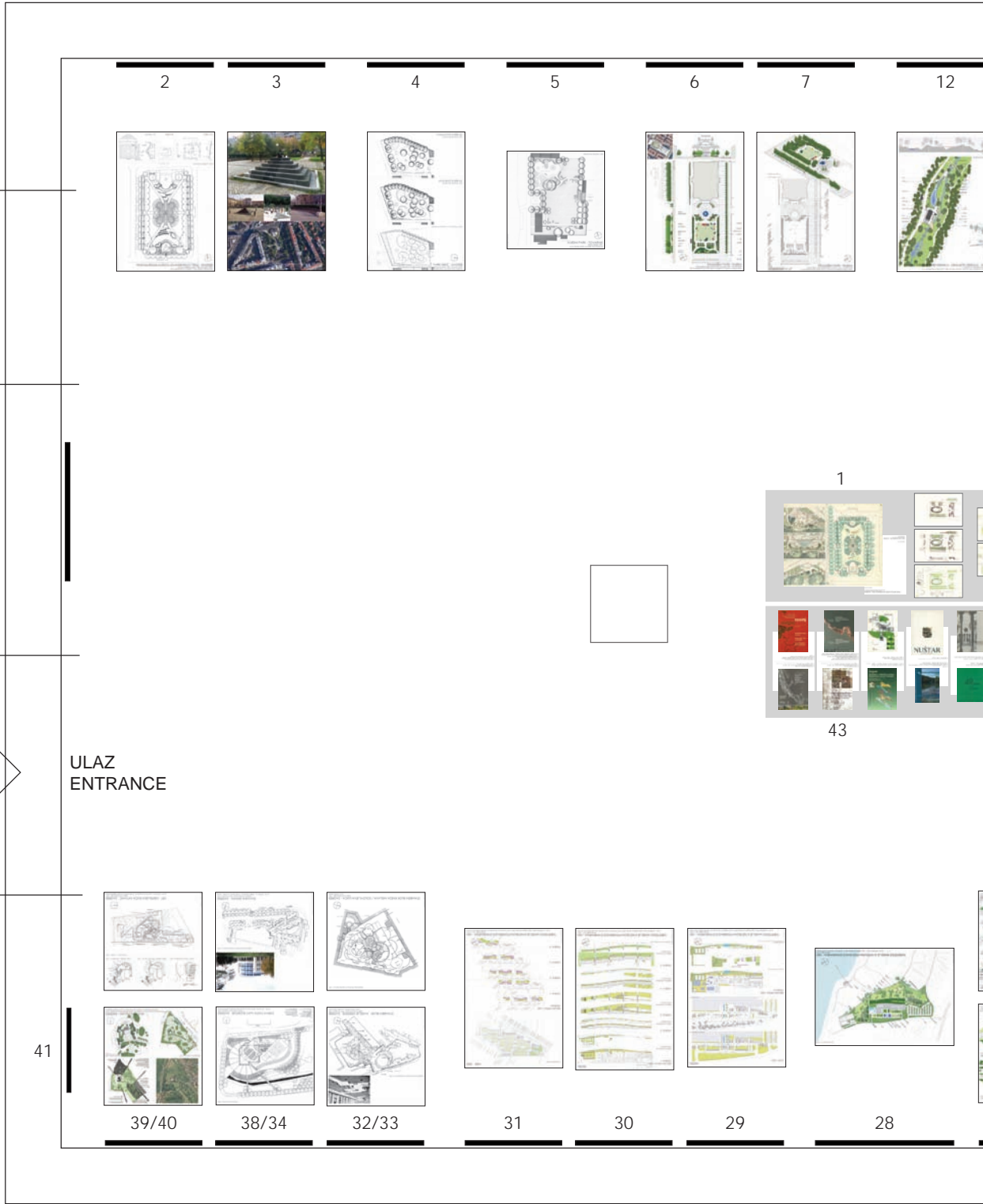
The exposition is not only a way of looking back at what has been done and to learn from it, but it can also serve as a source of inspiration for the younger generation to meet the challenges for landscape architecture for the 21st century in relation to climate change, energy transition and the creation of healthier environments for people. Thank you!

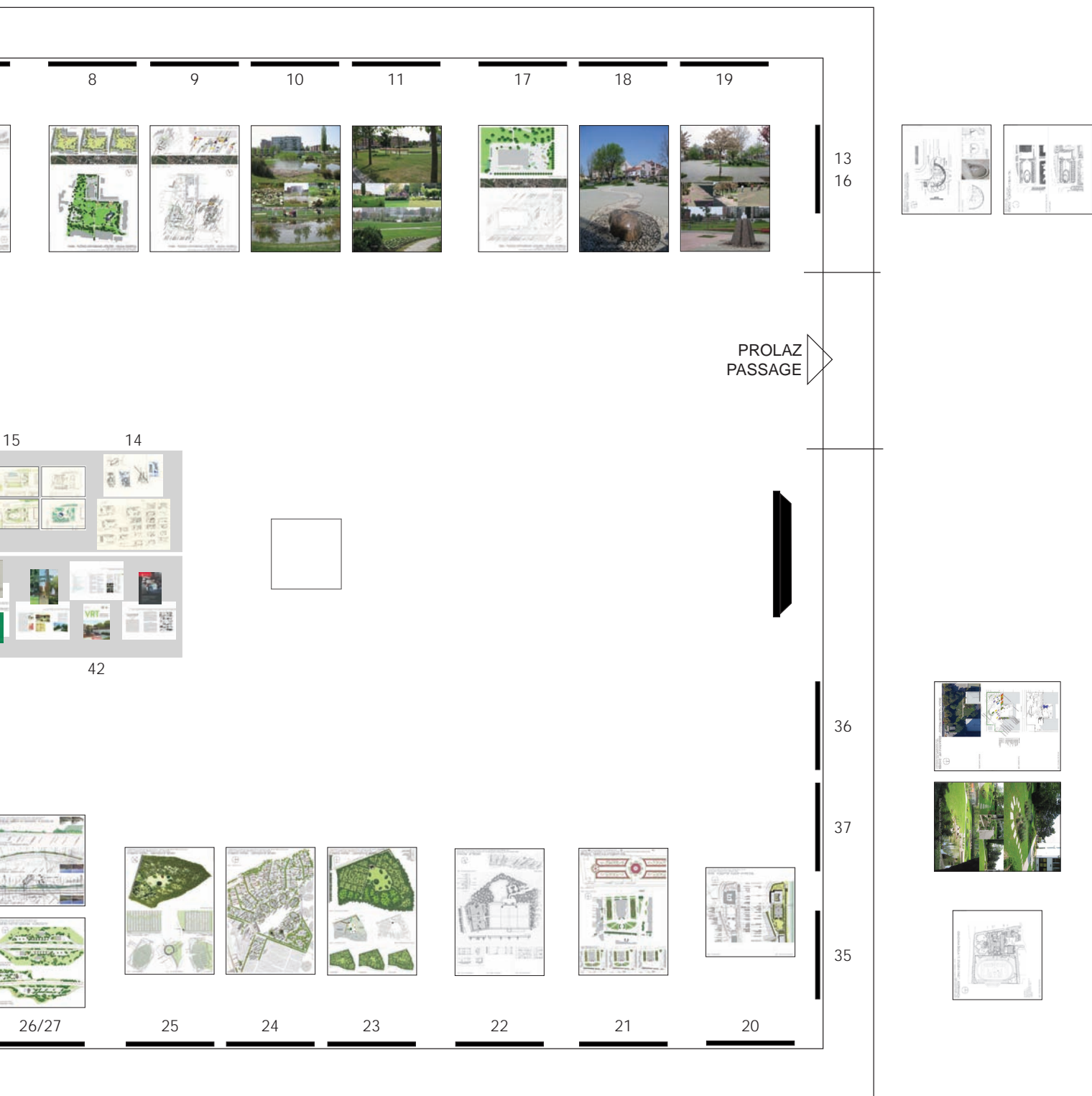


Fotografija / Photo: S. Stergaršek

Martin van den Toorn, profesor na Delft University of Technology (Nizozemska), Ecole Nationale Supérieure du Paysage de Versailles (Francuska) i na Fakultetu krajobrazne arhitekture Szent István Egyetem u Budimpešti (Mađarska), povremeno gostuje na studiju Krajobrazna arhitektura Agronomskog fakulteta Sveučilišta u Zagrebu.

Martin van den Toorn, professor at Delft University of Technology (Netherlands), Ecole Nationale Supérieure du Paysage de Versailles (France) and Faculty of Landscape Architecture Szent István Egyetem in Budapest (Hungary), occasionally guest professor at School of Landscape Architecture, Faculty of Agriculture, University of Zagreb.





krajobrazna arhitektica **BRANKA ANIČIĆ** izložba / **POSTAV**
 Gliptoteka HAZU - dvorana 4 IV, Zagreb, Medvedgradska 2 / 7. - 28. travanj 2021.
 autori: Stanko Stergaršek / Iva Rechner Dike

landscape architect **BRANKA ANIČIĆ** exhibition / **LAYOUT**
 Glyptothèque HAZU - hall IV, Zagreb, Medvedgradska 2 / 7th - 28th april 2021
 authors: Stanko Stergaršek / Iva Rechner Dike

krajobrazna arhitektica
landscape architect

BRANKA ANIČIĆ

izbor radova
project selection

IMPRESUM
IMPRINT

Dizajn knjižice
Booklet design

Stručna suradnja
Professional cooperation

Fotografije
Photos

Prijevod
Translation

Izdavač
Publisher

ISBN

Stanko Stergaršek
Iva Rechner Dika

Borka Bobovec

Petra Pereković (omot / cover)
Iva Ceraj
Stanko Stergaršek
Iva Rechner Dika

Iva Rechner Dika

Sveučilište u Zagrebu Agronomski fakultet
STUDIJ KRAJOBRAZNA ARHITEKTURA
University of Zagreb Faculty of Agriculture
SCHOOL OF LANDSCAPE ARCHITECTURE

978-953-8276-19-4

Zagreb, 2021

Realizirano radovima iz arhiva Zavoda za ukrasno bilje, krajobraznu arhitekturu i vrtnu umjetnost te iz arhive autorice kao zajednički projekt Hrvatskog muzeja arhitekture HAZU i studija Krajobrazna arhitektura Agronomskog fakulteta Sveučilišta u Zagrebu.

Realized with projects from the Department of Ornamental Plants, Landscape Architecture and Garden Art archive and from the author's private archive as a joint project of the Croatian Museum of Architecture (Croatian Academy of Science and Art) and the School of Landscape Architecture at the Faculty of Agriculture University of Zagreb.



STUDIJ KRAJOBRAZNA ARHITEKTURA
SCHOOL OF LANDSCAPE ARCHITECTURE
Sveučilište u Zagrebu Agronomski fakultet
University of Zagreb Faculty of Agriculture
Svetošimunska c. 25
10000 Zagreb
www.agr.unizg.hr